

# 2024 GLOBAL PHILANTHROPY GUIDE

Washington State Organizations Working Globally to Improve Lives




GLOBALWA



SEATTLE  
FOUNDATION





Adolescents making hand flower sign at a community-based girls' safe space; India.

Photo: Spreeha Foundation

## Who we are

### GLOBALWA

**Global Washington** supports the global development community in Washington state that is working to create a healthier and more equitable world. We promote our members, bring them together to spark new ideas and partnerships, and build a network of leaders improving lives around the world. We aim to change the world for the better by strengthening Washington state's vibrant global development community and increasing the impact of our members to improve lives in low and middle income countries.

With over 160 members, including some of the world's most respected companies, non-profit organizations, academic institutions, and foundations, Global Washington provides a platform to share knowledge, partner, and overcome challenges. We are building a dynamic network of stakeholders from which to draw expertise, exchange ideas, and form innovative collaborations.

[globalwa.org](http://globalwa.org)



SEATTLE  
FOUNDATION

**Seattle Foundation** ignites powerful, rewarding philanthropy to make Greater Seattle a stronger, more vibrant community for all. Focused on creating a more joyful region in service of our North Star, the Blueprint for Impact, our goal is to simplify giving and support transformative change for the more than 1,200 individuals, families, businesses, and non-profits we serve. As the community's foundation, we work to advance equity, shared prosperity, and belonging as a convener, grantmaker, and philanthropic advisor. Founded in 1946, we continue to evolve to be the organization our community needs. Seattle Foundation also works with partners to provide effective advising, education, and experiential learning for our philanthropists interested in making a difference around the world and is proud to be one of the largest grantmakers in the U.S. to global causes and organizations.

[seattlefoundation.org](http://seattlefoundation.org)

Cover: CreceLee project in Peru's Cusco region. Photo: Worldreader

# Welcome to the 2024 Global Philanthropy Guide

Produced in partnership with Seattle Foundation

**Global Washington** is a network of organizations with ties to Washington State that are working to improve people's lives in low- and middle-income countries. Global Washington promotes its members, connects them to one another, and strengthens their work.

**Seattle Foundation** is both a member of and partner to Global Washington. As one of the largest community foundations in the country and one of the largest community foundation grantmakers to organizations working abroad, Seattle Foundation works closely with philanthropists who invest in communities, both locally and internationally, harnessing their collective passion for lasting change.

In this year's edition of the Philanthropy Guide, you'll read stories of non-profit organizations working to educate youth in low- and middle-income countries. However, the value of these programs goes far beyond an academic education for individual students. These organizations provide essential social-emotional learning, health and hygiene, and a safe space that can be a lifeline for youth. In fact, studies show that communities without access to education have an increase in early marriage, forced labor, and child trafficking.

According to UNICEF, there are 64 million children of primary school age who remain out of school. This is compounded by an increase in conflict around the world where schools are then shuttered and sometimes never re-opened. Now more than ever, creating a safe space for children to learn, laugh, and play is essential and provides hope for a better future.

The organizations listed in this Philanthropy Guide are providing that hope for children in Afghanistan, Laos, Bangladesh, Uganda, Brazil, India, Peru, and other regions throughout the world. Please take the time to read their stories and learn more.

In addition, in the back of this guide you will find a full directory of Global Washington's more than 100 members, including descriptions of their work. On behalf of Global Washington and Seattle Foundation, we thank you for your partnership and commitment to making the world a better place for everyone.



**Kristen Dailey**  
Executive Director  
Global Washington



**Mary Rennekamp**  
Chief Philanthropy Officer  
Seattle Foundation



Through Worldreader, readers can access the BookSmart reading experience anytime, anywhere, on any device.

Photo: Worldreader



# SUSTAINABLE DEVELOPMENT GOALS

Global Washington supports the **United Nations Sustainable Development Goals (SDGs)**, a blueprint for building a better and more sustainable future for us all.



## CONTENTS

### Featured Organizations

A Child’s Notebook.....	6
Committee for Children International.....	9
Spreeha foundation .....	12
Worldreader .....	15
Sahar education.....	18
Sukarya.....	21
Child Empowerment Project.....	24
Ashesi University .....	27
GlobalWA Member Directory.....	29



## A CHILD'S NOTEBOOK

## Building a Brighter Future through Quality Education in Rural Laos

By A Child's Notebook, Photography by A Child's Notebook

In the pursuit of achieving Sustainable Development Goal 4 (SDG 4) – Quality Education, A Child's Notebook, an organization dedicated to empowering rural villages in Laos, stands as a shining example of commitment and innovation. Their multifaceted approach, centered on partnerships, infrastructure development, and complementary programs, is not only transforming the lives of thousands of children but also addressing some of the most pressing challenges in the field of education.

### CORE PROGRAMS

A Child's Notebook firmly believes that every child deserves access to a quality education. This belief is the driving force behind their work, as they strive to provide financial resources to construct schools and work hand-in-hand with village leaders to create educational facilities that best cater to the needs of their communities. The organization's approach encompasses three core programs: Construction, Scholarships, and Afterschool Programs.

One of the primary challenges faced by rural communities in Laos is the lack of proper educational infrastructure. A Child's Notebook recognizes this issue and addresses it head-on through their construction program. By focusing on building safe and sanitary school buildings, dormitories, and latrine facilities, the organization is ensuring that the

physical environment of schools is conducive to learning. Moreover, their commitment to sourcing materials locally not only supports the local economy but also ensures that their resources benefit Laos as much as possible. They have executed significant construction projects, such as the Don Chang lower secondary school dormitory and its kitchen. This initiative not only expanded the physical infrastructure but also improved the overall learning environment for countless children. To date, we have collaborated with local communities to build eight school buildings and four dormitories. These efforts are a testament to the organization's dedication to SDG 4, as they address the critical issue of infrastructure in rural education.

In their pursuit of quality education, A Child's Notebook recognizes the importance of removing financial barriers that often prevent children from continuing their education. Their scholarship program, implemented in collaboration with in-country staff and teachers, targets middle school children who may face challenges in attending middle school due to financial constraints or lack of interest. These need-based scholarships cover essential costs such as uniforms, supplies, and learning materials, ensuring that students have the necessary resources to thrive academically. The pilot scholarships introduced during the 2021-2022 school year yielded remarkable results, with a high retention rate among students. To date, we have distributed 650 scholarships,



Villagers building a primary school in Oudomxay province, Lao P.D.R.





Top: After school program in middle school in Oudomxay province, Lao P.D.R.

Above: New primary school built by villagers and materials provided by A Child's Notebook in Oudomxay Province, Lao P.D.R.

Left: Old and new middle school girl's dorm in Oudomxay province, Lao P.D.R.

continuing to make quality education accessible to those who need it the most.

Innovation is at the heart of A Child's Notebook's approach to education. Recognizing the importance of holistic development, the organization has launched an innovative afterschool program targeting elementary and middle school students. This program, initiated in the 2021-2022 school year, focuses on improving math skills and Lao language literacy. Certified teachers work alongside students, delivering 90 minutes of tutoring each day. Regular testing using standardized scales, determined by the Lao Ministry of Education, helps monitor progress, allowing for programmatic adjustments. This forward-thinking approach

to education not only supplements the elementary curriculum but also ensures that children have a well-rounded and enriched learning experience. A Child's Notebook has plans to scale this program to 90+ schools, further expanding its impact on education in rural Laos.

Schools in Laos are severely underfunded. To increase attendance and retention of our afterschool program, ACN requested project proposals from schools to fund whatever they needed. These projects were an unexpected success of our programming. In 2022, A Child's Notebook distributed \$10,000 to 20 schools to support projects that enabled schools to use their lived experiences to develop community-based solutions. Several schools delivered the afterschool



curriculum during lunchtime because many children had to travel a far distance to get back home after school. They provided lunch to children as well, as an incentive for them to attend as well as helping them focus. Another school utilized its community's strength in agriculture to develop a community garden that helped to feed the children. Excess food was sold to other community members to fundraise for the school. As part of these community-driven projects, A Child's Notebook will fund 40+ projects for community-developed ideas that help children gain access to food to improve their school and afterschool performance.

## PARTNERSHIPS

A Child's Notebook's success in advancing SDG 4 is in large part due to their partnerships with local communities, leaders, and educators. By involving village leaders in the planning and construction of schools, the organization ensures that the facilities meet the specific needs of each community. This community-centric approach fosters ownership and sustainability, making the impact of their work lasting and transformative. Additionally, their collaboration with in-country staff and teachers in scholarship distribution and the implementation of afterschool programs highlights the importance of local expertise in achieving quality education. By working together with local stakeholders, A Child's Notebook creates solutions that are not only effective but also culturally sensitive and contextually relevant.



New water tower funded by A Child's Notebook and built by villagers for a primary school in Khammouane Province, Lao P.D.R.

## CHALLENGES

While A Child's Notebook has made significant strides in promoting quality education in rural Laos, they also face certain challenges. The organization recognizes that there is still much work to be done in ensuring that every child in the region has access to education. Financial constraints, infrastructure limitations, and the need for ongoing teacher training are among the challenges they confront. The COVID-19 pandemic has further exacerbated these challenges, highlighting the importance of adaptable solutions in the face of crises. A Child's Notebook is committed to addressing these obstacles and finding innovative ways to overcome them.

## CONCLUSION

In the pursuit of SDG 4 – Quality Education, A Child's Notebook stands as a beacon of hope in rural Laos. Their comprehensive approach, which includes infrastructure development, scholarships, and innovative afterschool programs, is transforming the lives of thousands of children, giving them the opportunity to receive a quality education. Through partnerships with local communities and a commitment to innovation, A Child's Notebook is not only addressing the challenges of today but also building a brighter future for the children of Laos. As they continue their work, their dedication to quality education remains unwavering, inspiring us all to strive for a world where every child has the chance to learn and succeed.



Agriculture program and Gardening project in middle school, Oudomxay Province, Lao P.D.R.



## COMMITTEE FOR CHILDREN INTERNATIONAL

## Social-Emotional Learning: A Key to a Child's Sense of Well-Being

by Carolyn Hubbard, Photography by Committee for Children

Thinking back to your time in elementary school, what moments do you most remember? Is it the social interactions, when a teacher supported you, what happened out on the playground, or is it a particular lesson or quiz? Our school experience is so much more than academics, and a good education becomes a quality education when a child's well-being and connection to their school community is positive and healthy. Key to this are educators who nurture and foster a child's sense of wellbeing. Social-emotional learning (SEL), which is the process of developing self-awareness, self-control, compassion, and interpersonal skills, is an important part of this equation for both teachers and students.

Committee for Children (CFC) is a leading provider of research based SEL programs for schools. We started over 40 years ago, when two cultural anthropologists and a group of education psychology scientists at University of Washington studied the impact of trauma and what skills children needed to stay safe and prevent violent behaviors. The first program they developed based on their research was "Talking about Touching" a first-of-its-kind classroom-based child sexual abuse prevention program. The second program focused on the skills their research had shown could help a child not engage in harmful activities – skills like empathy, emotion regulation, problem solving. This program, Second Step®, has continued to evolve with new

versions as the field of SEL research grows. Since it first launched, it is still one of the most widely used research- and evidence-based SEL programs in the United States.

Recognition of the program's impact catalyzed partnerships in other countries, and adapted versions of Second Step were soon in Germany, Norway, Sweden, Denmark, and Finland. Initiatives in those countries inspired organizations in Slovakia, Lithuania, Turkey, and Japan to also develop versions of the program for schools they served.

As awareness of the benefits of SEL continue to gain traction around the world, Committee for Children International's network of partners continues to grow to Australia, China, Brazil, Panama, and Mexico. Here are just a few stories of our collective reach.

### BRAZIL – INSTITUTO VILA EDUCAÇÃO

The mayor of Boa Vista knew her schools needed support. Capital to the state of Roraima in the Northwest corner of Brazil abutting Venezuela, Boa Vista was experiencing unprecedented waves of Venezuelan refugees settling in the city. Schools were feeling the strain and stress. The mayor had heard about a program being piloted in public schools in Sao Paulo that taught empathy, emotion



One of CFC's international initiatives includes preschool programs in Shanghai, China.

**“Programa Compasso allows us to get closer to families and children, which promotes trust, thus facilitating conflict resolution and constructive change, which results in a better quality of learning.”**

—Teacher, Instituto Vila Educação, Brazil

regulation, relationship skills, and reached out to our partner organization, Instituto Vila Educação (IVE).

Since 2015, Committee for Children (CFC) International has worked with IVE, a leading provider of education training, to develop the Brazilian adaptation of the Second Step program and supported the local team’s development of expanded SEL training.

Starting in 2017, all of Boa Vista’s 95 municipal elementary schools began to implement Programa Compasso Socioemocional, the Brazilian adaptation of Second Step. This citywide initiative is now in its sixth year and has reached over 50 thousand students and 1800 teachers. A local team provides the schools’ annual training and

implementation support, and a WhatsApp group administered by IVE provides teachers with regular check-ins and encouragement. More recently, the local team and IVE launched an initiative to improve family engagement with the schools by organizing school open houses to learn and practice with their children the same SEL skills being taught in classrooms.

IVE also provides curriculum and supports implementation to an additional nine municipalities in the country, reaching some 300,000 students and over 4 thousand teachers. And as interest and acceptance of SEL continues to grow in Brazil, IVE and CFC International are now supporting an initiative with the state of Sao Paulo’s Department of Education to include an adaptation of Programa Compasso (Second Step) in all state public primary schools as the required SEL curricula. Pretty soon up to 2 million students in that state will also be learning life skills. As one teacher notes: “Programa Compasso allows us to get closer to families and children, which promotes trust, thus facilitating conflict resolution and constructive change, which results in a better quality of learning.”

## PANAMA – UNITED WAY OF PANAMÁ

In March 2020, as COVID-19 disrupted all daily routines, schools around Panama closed, and there was no telling when they’d open again. The Ministry of Education and the



Starting in the early 2000s, “Trin for Trin,” the Danish version of Second Step, reached thousands of kindergartens throughout Denmark.





Primary school children in Boa Vista, Roraima state, Brazil, learn to their focus attention with Programa Compasso Socioemocional.

local TV station SERTV quickly moved all of schooling to TV show-based lessons. Our partner, United Way Panama, had been supporting an initiative for preschools that included implementing a localized version of our Second Step Early Learning Program. So, when the TV producers reached out to them asking if they had any way to provide more preschool programming for television, we got right to work, reformatting daily activities with songs, puppets, and executive function games to create TV-ready activities. Each Friday morning across the country, preschoolers (and sometimes their parents, too) would tune in to 'Contéctate con la Estrella' to learn and practice songs and skills to help them build their resilience and calm down during stressful times.

### MEXICO – ATENTAMENTE CONSULTORES

AtentaMente' program Educar para el bienestar (Educating for Wellbeing) is a robust professional development program for educators and educational authorities in Mexico. The program has directly benefited over 15,000 educators, most in low-resourced communities, and in

2021 was spotlighted by HundrED as one of the best SEL innovations globally, winning the prestigious WISE Award in 2022 as an innovation to solve global education problems. With such an impressive program and reach, it made sense for AtentaMente to increase their impact by offering a quality SEL curriculum that educators in their PD courses could implement in schools. With initial funding from Tinker Foundation, AtentaMente and Committee for Children International are now collaborating on building out a culturally adapted SEL curriculum for lower primary grades to be implemented in public schools in four states in the Yucatan Peninsula. Upwards of 40,000 primarily Indigenous children will benefit from this initiative that aims to foster their self-esteem and resilience and improve academic outcomes.

These collaborations, among many others, inspire us to consider new ways we can support other organizations' efforts to integrate SEL into the learning experience. In partnership, we can help children the world over to learn and thrive, so that their memories of school are ones of accomplishment and joy.

## SPREEHA FOUNDATION

## Spreeha's steadfast commitment to child development and girl empowerment

By Spreeha Foundation, Photography by Spreeha Foundation

Spreeha Foundation is on a mission to transform lives by empowering people in Bangladesh and beyond. We operate through four program pillars – making quality healthcare, education, skills training, and economic opportunities easily accessible to underserved communities and thus helping them to thrive.

Spreeha's educational initiatives encompass two vital components: early childhood development, which is paramount for ensuring quality education, and girl empowerment program that addresses the unique challenges faced by girls, who are often the most vulnerable to social issues and dropout rates. In this article, we will delve into Spreeha's dedicated efforts to promote early childhood development and girl empowerment, aligning with the Sustainable Development Goal 4: Quality Education. We will explore the challenges we confront, our innovative solutions, and the distinctive approach we employ to achieve these goals.

### OUR GUIDING PRINCIPLE: LEARNING THROUGH PLAY AND GROWING THROUGH COLLABORATION

To uphold our mission of ensuring quality education, we ask ourselves one important question – if we had only one dollar to invest in education, where would we invest it? The answer comes easy to us – early childhood development care.

The early years of a child's life heavily shape their brain architecture. An astounding 85% of a child's brain develops within the first five years, making the experiences during this critical period matter for a lifetime. These experiences are profoundly influenced by the child's environment and relationships with their parents, families, and caregivers. Fostering a safe, nurturing environment and healthy relationships for children under the age of five is pivotal in preventing the emergence of complex social problems as they grow. It serves as the gateway to resolving numerous intricate social issues.

In Bangladesh, formal government-provided education begins at the age of six, with a notable emphasis on early childhood development. However, the widespread inclusion of pre-primary education and early childhood care for children aged three to five is still in progress. While children from more privileged backgrounds readily access private preschools and daycares, a staggering 86% of children from underserved households are denied this opportunity. In the urban underserved communities where Spreeha has been dedicatedly working for the past decade, the average monthly household income stands below \$150. Both parents typically work full-time to make ends meet, often leaving their preschool-age children unattended or in the care of older siblings. This situation impedes their ability to thrive in a safe environment. Moreover, parents in these communities often lack awareness of early childhood



Playful and happy kids attending class at preschool.



development, and the fear of additional expenses discourages them from sending their children to private preschools.

At Spreeha, we recognize that investing in early childhood development is investing in a brighter and more equitable future for all. We establish preschools right within the communities, focusing on creating an environment that empowers children aged 3 to 5 from underserved households. Our approach is rooted in a proven child-centered model that centers around play-based learning.

Each community preschool has the capacity to support 120 children and their families for a full year. This continuity allows a three-year-old child to access our preschool services for three consecutive years. When they reach the age of six, our teachers assist them in transitioning to formal primary schools, ensuring a seamless educational journey.

Our community preschools feature three key elements:

**Accessible location and playful space:** We provide a safe and easily accessible space within the community, making it convenient for children to attend. Our preschool spaces are thoughtfully designed to be vibrant and child friendly. Each classroom features a 360-degree blackboard on the wall, allowing all the children to actively participate, write, and draw simultaneously. We provide a variety of play materials within the space to encourage play-based learning, fostering creativity and exploration.

**Well-Researched curriculum:** Our curriculum is based on extensive research and is designed to promote skill development and school readiness in an engaging and enjoyable manner.

The central theme revolves around the notion—you learn through play, and you grow through collaboration. Every aspect of our preschool activities is meticulously designed to immerse children in a collaborative environment, where they not only learn but also flourish by engaging with their peers. Our curriculum encompasses both independent and guided play to foster the development of essential psychosocial, gross motor, fine motor skills, and creativity. Through interactive activities such as singing, reciting, dancing, drawing, and storytelling, children acquire knowledge and skills while having fun.

Furthermore, we extend our commitment by considering the health and nutritional status of our students. Our community health workers conduct quarterly growth check-ups for preschool children and connect them with nutritionists and doctors when necessary. We engage parents in meetings and one-on-one sessions, educating them on the significance of health and nutrition and how they can incorporate a healthy lifestyle for a lifetime.

We also prioritize individualized learning plans. Recognizing each child's distinctiveness, our teachers assess students' skill development and milestones regularly. Based on it,



Preschool students running playfully in front of the facility.

teachers cater to each student's specific needs and age. This ensures children progress at their own pace while receiving the required support.

**Parental and Community Involvement:** We actively involve parents and the community in the child's development, recognizing the importance of a collective effort in nurturing children's growth and potential. This collaborative approach ensures that both home and the wider community provide an enabling environment for each child's development.

### OUR FOCUS: 360-DEGREE SUPPORT FOR GIRL EMPOWERMENT

In Bangladesh, nearly one-fifth of the population comprises adolescents, poised to shape the economy in the next 10 to 15 years. However, approximately 14.4 million girls lack access to empowerment opportunities. Often relegated to statistics on child marriage or school enrollment, these girls face significant hurdles. While primary education enrollment stands at 97%, secondary school enrollment drops to 54%, and tertiary education plummets to 36% due to factors like child marriage, child labor, violence, and substance abuse. This jeopardizes their prospects, perpetuating cycles of submission and discrimination, particularly among urban slum-dwelling adolescents.

Empowering these girls requires a proactive, multifaceted approach to help them realize their potential, receive

unwavering community support, and plan for sustained education and meaningful employment. Spreeha's girl empowerment program takes a comprehensive approach, offering 360-degree support through the framework of the Adolescent Girls Club. This multifaceted strategy aims to create safe space for girls, equip girls with essential skills, and engage community for sustainable change.

We strategically establish Adolescent Girls Clubs within the girls' communities or schools, eliminating the need for extensive travel. This thoughtful placement ensures consistent participation, reduces the risk of dropouts, and provides a nurturing environment for girls to express themselves freely. This support enhances their self-esteem and fosters a profound sense of belonging. The peer networks formed within these spaces are invaluable and extend well beyond

the program's duration, offering continued support as the girls navigate adolescence and adulthood.

Our program offers a comprehensive curriculum that includes leadership development, social and environmental education, financial and digital literacy, and income generation. These practical skills empower girls to overcome societal obstacles and take control of their lives. They acquire knowledge that is relevant to their future education, careers, and personal growth. Furthermore, girls design and execute social action projects based on their learning at the club, reinforcing their sense of agency and responsibility, serving as an enduring inspiration, and motivating them to create positive change in their communities.

Spreeha actively involves parents, community members, and stakeholders in discussions and promotes local solutions for girl empowerment, fostering community ownership. Over time, this engagement transforms mindsets towards inclusivity and gender equity, leading to ongoing support for girls' rights and opportunities. The positive impact of this transformation extends to current and future generations of girls, fostering lasting change.

As of September 2023, Spreeha has supported 2600 children and their families in Rayerbazar and Dakkhingaon slum in Dhaka through preschool. Over 3000 girls have graduated from our girl empowerment program. Going forward, we plan to expand our reach, produce strategies to sustain our model's long-term and continue to bring more real-time impacts. Contact us at [info](mailto:info@spreeha.com)

Check out our verified impact report of early childhood development at [tinyurl.com/spreeha](https://tinyurl.com/spreeha).



Story time with a teacher at preschool.



Adolescents interacting in School-based girls club.



## WORLDREADER

## Beyond Bedtime Stories: How Worldreader and BookSmart are Revolutionizing Reading for Children Everywhere

By Amber Cortes, Photography by Worldreader

Think about your favorite book from your childhood – did you read it with your family before bedtime? Or maybe at your school's book club?

For many children in the US and around the world, accessing inspiring and unforgettable stories isn't easy. Time and resources aren't enough to support the foundational reading they need to reach their potential. And too often, parents and caregivers lack confidence in their own reading skills to promote reading at home.

But the good news is, reading is changing. And with over **80% of households** in lower and middle-income countries owning mobile phones, technology is being used to bring world-changing stories to children and families who need it most.

"It can happen anytime – in a laundromat, or sitting on a bus when you're taking your child to school," says Rebecca Leege. She's the CEO of Worldreader, a non-profit organization that provides digital reading materials to under-resourced communities around the world.

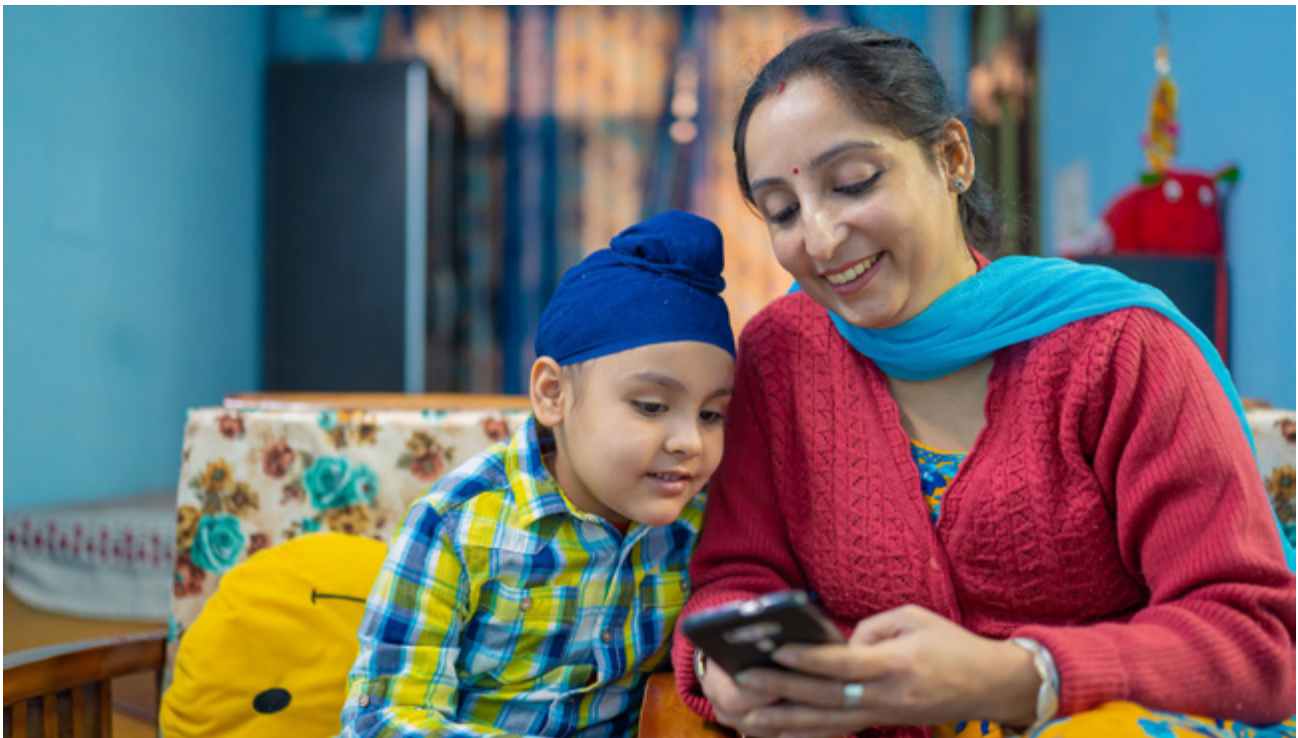
What and when people read also looks different across cultures, too.

"It may be on a Wednesday afternoon that we see more readership happening in some countries versus a Sunday afternoon, depending on what's culturally relevant in those communities."

In India, people read more for news and information while in Sweden, people read for fun and pleasure. In China, science fiction and fantasy are popular with kids, while in Brazil, it's all about adventure stories.

Founded in 2010, Worldreader believes that readers build a better world. The international organization is tapping into the data and cultural contexts of what people read and when, not to serve ads, but to improve reading rates and promote lifelong learning. The organization leverages digital technology and builds partnerships with schools, libraries, and community organizations to get children reading, increasing access to books, reading tools, and educational materials for families around the world.

An early-stage executive at Amazon, co-founder and Board President David Risher traveled the world with his family doing service-oriented work and volunteering, and saw the learning gap for himself in the form of empty school libraries and outdated books. He used his knowledge of Amazon's Kindle to build BookSmart, a digital reading platform to



Worldreader eN-READ project in India – Worldreader empowers caregivers to support their child's reading journey at home, school, and beyond.



Worldreader eN-READ project in India.

motivate and engage families to read with and to their children anytime, anywhere.

Now, BookSmart is being used in more than 100 countries, delivering a reading experience based on over 3 thousand children's titles in English, Spanish, Hindi, Arabic, Kiswahili, and several local languages. Since 2010, Worldreader has reached over 22 million readers, and in 2023, they've been awarded the US Library of Congress Literacy Award, International Prize, for their contribution to global literacy.

"We know that a child's love of reading starts at home. If you don't have opportunities to read from a young age, you're never going to have enough reading practice. And you're ultimately not going to become a reader," says Leege. "We also know that caregivers want to give their children the best

**"If you become a reader, you have a 30 to 40% increase in your earning potential compared to your illiterate counterparts. That's significant."**

Rebecca Leege. CEO, Worldreader

chance at a fulfilling life. So how can we promote a culture of family reading and provide caregivers with opportunities to support their children's learning journey, anytime and anywhere they can?"

And it's not a moment too soon. The learning crisis has been exacerbated by COVID-19, and **UNICEF warns** that 64% of ten-year-olds cannot read or understand a simple five or six-sentence story – meaning that they're living in learning poverty.

According to "The State of the Global Education Crisis," a joint **study** of UNESCO, UNICEF, and the World Bank, learning poverty increased from 50 to 70% for children in low and middle-income countries. Due to school closures, students now risk losing \$17 trillion in lifetime earnings, or the equivalent of 14% of the global GDP.

"We've gone back two decades in the United States in terms of reading proficiency," says Leege. "And I think we have to be really creative on how we integrate reading across community sectors for us to be able to make that next big leap forward in addressing these statistics."

And by using new approaches to get technology into the hands of parents and children, as well as relying on a robust set of data-gathering practices to inform these approaches, Worldreader is doing just that.

For example, in the United States, Worldreader worked with a partner organization, Raising a Reader, to set up a BookSmart program at Ravenswood Family Health Center in California. Pediatricians, who now recommend up to 20 minutes of reading a day at minimum, can even reach families in the waiting room and continue to ensure their families read at home right with the mobile they own.

"Where else do we reach parents and where are they sitting with their children?" asks Leege. "Our data shows that families are reading several 100 pages a week of content in these communities, and these are some of the most vulnerable in that area."

It's proven so popular that Ravenswood has opened up a second BookSmart program site in Daly City.

Latin America is among the regions where learning poverty has increased the most during the pandemic, going from **52% to 79%** in just two years. Worldreader's CreceLee program takes a holistic approach, supporting mobile reading at home while working with educators to increase reading resources in the classroom.

Ericka Lock, Principal of the Kaphan Foundation and Worldreader US Board Member, says: "I have seen the power of Worldreader's CreceLee program in Peru, when families, communities, and schools join hands in getting children reading. When children are read with and read to, you begin to see their own reading confidence grow, and their educational outcomes improve. Offering families BookSmart with



great children’s books and activities right on the phone they already have, benefits not only the kids but the whole family and their community.”

Reading, says Leege, can be a life-changing experience. That’s why BookSmart has built-in activities and upcoming gamification elements connected to the content in its library. Kids can feel proud of their reading accomplishments while parents can engage their children in simple, structured activities designed to support not only literacy skills but also help with social and emotional learning, being self-aware, and practicing empathy.

“A five-minute story can turn into a fifteen-minute beautiful discussion between a child and a caregiver,” says Leege.

These are small things, Leege says, but they have huge implications for that child’s education trajectory as they go forward.

“If you become a reader, you have a 30 to 40% increase in your earning potential compared to your illiterate counterparts. That’s significant.”

Since 2010, Worldreader has reached over 21 million readers in more than 100 countries. Readers can access the BookSmart reading experience anytime, anywhere, on any device.

Also significant, and on a global scale, is the impact that reaching Sustainable Development Goal 4 – ensuring inclusive and equitable quality education for all – can have on the success of the other 16 Sustainable Development Goals.

Albert Zeufack, the World Bank’s former chief economist for the Africa region, **said** that “if we address the learning crisis, it will have the same effect as eliminating extreme monetary poverty, stunting, or hunger.” Meaning that empowering parents and caregivers to read with and to their children can help us build a better world for all.

And it all starts with a family, a story, and a mobile device.



Worldreader India Read to Kids project.

## SAHAR EDUCATION

## Women and Girls' Education: Courage and Resilience in the Face of Injustice

By Meetra Alokozay, Executive Director, Sahar Education, Photography by Sahar

Historically, women have long borne the brunt of social, political and economic instabilities, with very little to no control over the situation. However, to be “officially” banned from a right as basic as getting an education might be unfamiliar to many. Afghanistan is the only country in the world where women are banned from getting an education, for the second time now. What is known of Afghan women are mostly from the post 9/11 narratives, none of which fully represent the gains and the losses that Afghan women have had to go through. From being able to vote in 1919, to gaining the right to equal political and social participation in the 1960s, to a total loss of right to education, employment, and participation in the social and political spheres as a result of the political unrests in the 80s and 90s.

Many girls in Afghanistan were far behind in their access to education due to years of Taliban rule; stigma against girls' education, the lack of available facilities, and early marriage or motherhood kept girls from school. To address these needs, Sahar built and repaired schools mainly for girls.

In 1996, when the Taliban came to power for the first time, they immediately shut down all girls' schools and barred women from all public spaces. Most girls were out of school and some attended secret schools that were created as a response to school closures. In 2001, after the US invasion, schools reopened and millions of children entered the school system—many for the first time. One-third of these students were girls. Though women were again allowed to teach and even be principals of schools, girls were still substantially under-represented among the students flooding the Afghanistan education system. Many girls in Afghanistan were far behind in their access to education due to years of Taliban rule; stigma against girls' education, the lack of available facilities, and early marriage or motherhood kept girls from school. To address these needs, Sahar built and repaired schools mainly for girls. To improve the quality of education in girls' schools, Sahar launched teacher training programs. In 2015, Sahar launched the pilot for the Early Marriage Prevention Program in two Afghanistan schools. As we worked with young girls and their families, the importance of working with men to achieve gender equity was reiterated to us. Hence, Sahar launched its Men as Partners in Change Program.

Women and girls had, once again, made significant gains in social, political and economic affairs in the years after the Taliban were overthrown. Waves of educated Afghan women entered the workforce; doctors, engineers, architects, teachers, musicians, artists, journalists, parliamentarians, civil servants, police officers, social workers,



Female Kabul Medical University Students in the 1970s



Home Based IT & coding class.





Students attending Gohar Khatoon High School built by Sahar Education.

businesswomen and so on. The social dynamics had started to change. Society had, once again, started to be more accepting of gender equality. Twenty years of hope and hard earned rights came crashing down when the Taliban rapidly made their way to Kabul and took over Afghanistan for the second time in August of 2021.

Since returning to power, Taliban leaders and their de facto regime have issued more than 30 decrees banning Afghan women from access to any education beyond grade six, employment of Afghan women in almost all sectors including national and international organizations, women traveling without a male blood relative (mahram). The ministry of women's affairs has been dissolved. Journalists and female protesters have been detained and tortured. The economic and hunger crisis have only worsened. Women and girls in Afghanistan face systematic gender apartheid and discrimination.

While many organizations suspended or canceled operations in Afghanistan, Sahar saw the need, more than ever before, to step in. We have since pivoted slightly, however our mission to create educational opportunities in Afghanistan that empower and inspire children and their families to build peaceful, thriving communities, still remains the same. While we have paused our efforts to build girls' schools, we partner with in-country grassroots organizations in Afghanistan to provide learning spaces and educational programs for girls and women. As the de facto Taliban regime tries to eliminate girls and women from the Afghan society and brainwash men, it is crucial to educate

women about their rights and support them in their journey of self-empowerment.

Our English, Digital Literacy, and Women Empowerment programs allow us to offer a series of innovative and informative workshops and classes to support Afghan girls' education by expanding their knowledge in various fields such as learning through technology, leadership seminars, English and computer classes as well as women's empowerment and women's health workshops, in Mazar-e-sharif. The goal is to provide participants with a sense of ownership and importance in designing solutions to community problems and to teach girls leadership skills, and the importance of their rights and voice. Furthermore, Afghan girls will gain English language and computer skills to help them access online education and professional platforms, which is one of the few options available for girls. In our women's empowerment and women's health workshops, participants learn and discuss important topics such as human rights, early marriages, leadership, domestic violence, mental health, reproductive health, and menstrual health.

**Sahar recently launched its underground IT & Coding classes for girls. With the Taliban's draconian policies and ban on girls' education and employment, many are turning to online opportunities.**



Young women get together at their sewing and literacy classes.



Sahar recently launched its underground IT & Coding classes for girls. With the Taliban's draconian policies and ban on girls' education and employment, many are turning to online opportunities. Compounding this issue is the limited access to computer courses in remote areas and for economically disadvantaged students, making it challenging for them to receive basic computer skills training to access online learning platforms. Our program bridges the digital gap in Afghanistan by empowering women to learn and practice computer skills. Sahar's IT and coding courses blend theoretical and practical lessons for hands-on experience. Courses run for three to six months and cover computer basics, MS Office, and website building. Our initiative enables girls to develop a solid foundation in these skills, preparing them for accessing online education and online employment opportunities.

To address the needs of women who have already missed the chance to receive an education, Sahar has designed basic literacy and sewing classes. The literacy and sewing project is designed for economically disadvantaged girls and women aged 18-40 who have not had the opportunity to get formal education. The program provides participants with free literacy and sewing skills classes. Additionally, we are integrating Sahar Education's women's leadership and health workshops in the literacy class to educate participants about important topics such as mental health, early marriage prevention, planned parenthood, and support them in their journey of self-empowerment. Besides learning how to read and write, the program aims to provide participants with the opportunity to gain skills that will lead them to become financially independent. All participants get to take their sewing machine home at the end of the program so that they not only have the skills but also the means to start their own small business. Three of our students have already started to receive orders from their relatives and neighbors.

Additionally, Sahar is closely working with one of our partners to re-launch our Men as Partners in Change program soon.

While the times are beyond difficult and disheartening, our students continue to be our source of inspiration. The courage and resilience that they show in the face of injustice motivates us to work harder and be there for them as they pursue their journey of growth and self-empowerment. Sahar understands the importance of education in achieving gender equity, and we will continue to support our girls.



Sahar student prepares a PowerPoint presentation.



## SUKARYA

## Creating Grass-roots Solutions for Gender Equality through Education

By the Sukarya Team

Gender equality and education are intertwined with each other and have been the essential pillars for ensuring inclusive economic growth and social development. However, developing countries have not been able to effectively promote gender equality and provide education. While social stigmas and lack of awareness are the primary barriers for promoting gender equality, lack of resources and access have been detrimental for providing education. India is no exception as it was ranked 135th (out of 146 countries, in 2022) in gender parity by World Economic Forum (WEF). Although India ranks 33rd in terms of education, the access to education is a challenge among rural and socio-economically marginalized communities. At a time when India's economic growth is booming, there is a need for grassroots level programs that address the challenges and help in achieving these Sustainable Development Goals (SDGs).

### ADVOCATING FOR EDUCATION & EMPOWERMENT

Sukarya is a Non-Governmental Organization (NGO) working on promoting gender-equality and providing education by engaging communities through targeted and customized

programs. Operating in urban slums (in India), Sukarya has been delivering curriculum-based gender equality program and providing education through its flagship Education on Wheels (EOW) program (since 2017). The basis for functional facets of the programs have been United Nations (UN) guidelines under the Sustainable Development Goals (SDGs). Based on the defined scope of the gender equality and education programs, SDG indicators are being used to measure the progress. However, variations in the cultural factors, socio-economic factors, and resource availability, have led to adoption of innovative approaches to improve the outcomes. Engaging communities and incorporating their feedback in restructuring the programs has helped in overcoming challenges. Further, the presence of global experts, members, and an ever-increasing pool of advisers, has been a hallmark of Sukarya's success. It is a combination of the above-mentioned factors, which contributed to Sukarya's recognition as one of the top 10 NGO's working for boosting education of girls among underprivileged communities. GuideStar India Champion level – Platinum certification, and accreditation as a member of *Credibility Alliance for Desirable Norms*, reflect Sukarya's caliber.



Gender Equality Program for Adolescent Girls. Photo: Joel Meyers

## SUKARYA'S GENDER EQUALITY PROGRAM— EMPOWERING ADOLESCENT GIRLS FOR A BRIGHTER TOMORROW

In India, there is lack of access to knowledge and credible information pertaining to adolescent sexual and reproductive health, and gender education. Cultural practices, societal stigmas, and limited access to education and healthcare have been the primary contributing factors. These factors have resulted in permeation of misinformation and myths, gender discrimination and violence, and sexual and reproductive health issues in adolescent girls. Especially, adolescent girls belonging to socio-economically backward communities are extremely vulnerable. Gender inequality is the major outcome of these existing differences, and there is a need for holistic approach to tackle these challenges for promoting gender equality.

Sukarya has adopted a three-pronged approach for promoting gender equality at the grassroots level. The inspiration behind this approach is to deliver validated and evidence-based knowledge and information in a presentable and understandable way, for adolescent girls to overcome the barriers and take charge of their lives. Activities under this program are delivered at the community level and at schools for adolescent girls. Gender equality program consists of the following components to address existing challenges.

### 1. Basic knowledge and awareness on reproductive and sexual health, and build skills for family life (for adolescent girls):

Under this component validated information about reproductive and sexual health is delivered in educational sessions. Awareness is provided about the importance of understanding puberty related physical and emotional



Unlocking the potential of adolescent girls. Photo: Sukarya

changes, protection from unwanted pregnancies and sexually transmitted infections, and hygiene. In addition, education about family life is offered and skills required for managing it are also provided. This empowers them to make informed choices, comprehend their rights and responsibilities in the family, and develop communication and conflict resolution skills.

### 2. Building basic digital skills, enhancing their abilities for better employability, and awareness on discrimination and social stigmas:

Digital inclusion is essential for promoting gender equality, as it expands opportunities for adolescent girls in education and career. Further with tools like social media, they can establish new connections and meet empowered peers for better opportunities. Sukarya believes that building basic digital skills can help in dismantling traditional gender roles and reduce gender-based economic inequalities. Moreover, awareness about discrimination and social stigmas, help adolescent girls identify and overcome these biases. Digitally empowered adolescent girls can become drivers of change within their communities, thereby motivating others to adopt similar practices.

### 3. Promoting the importance of Water, Sanitation and Hygiene (WASH), and Community engagement and communication:

The need for WASH related initiatives cannot be undermined, as infectious diseases continue to be prevalent in India. Awareness and education about WASH is provided to adolescent girls for teaching the direct impact of hygiene on health, importance of prevention in reducing healthcare costs, and building skills to promote WASH within their communities. In addition, guidance pertaining to community engagement and communication is provided to build confidence in adolescent girls to be effective drivers of change in their respective communities.

With the implementation of above-mentioned activities, Sukarya has benefited over 10,000 adolescent girls, since the inception of gender equality program in 2017. Multiple success stories of change have been documented, where adolescent girls have stood against childhood marriage and other societal pressures to take charge of their own future. To further strengthen the program outcomes, Sukarya has been looking to partner with organizations willing to provide employability options for the adolescent girls trained under the gender equality program.

## EDUCATION ON WHEELS (EOW) – BRIDGING THE GAP TO PROMOTE EDUCATION FOR ALL

Through Education on Wheels (EOW) program, Sukarya provides education to children and adolescents, who otherwise cannot access formal education. A dedicated bus well equipped with required stationary, computers and





Education on Wheels — bringing hope, education, and opportunity to marginalized communities in the slums of Delhi.  
Photo: Sukarya

teachers reaches the communities to deliver education. The education provided is non-formal, however, the students appear for an Open Basic Examination conducted by the Government of India. Students clearing the exam are provided the opportunity to get mainstreamed into formal education system. The program provides a favorable learning environment to children and adolescents who cannot access any type of education. Exposing over 100 students to education every day, the project provides an opportunity for the children to gain minimum knowledge and skills. Remedial classes are offered to those who have missed classes, thereby ensuring continuity. Key programmatic aspects of EOW include:

- Non-formal education provided on life skills, health, nutrition, careers, and values.
- Multi-grade teaching to cover students across various age groups and at different levels, all taught under one single roof.
- Special teaching methods and techniques for fun-based learning to ensure children don't drop out.
- Basic computer education is also provided.
- Healthy teacher-student interaction, with regular parent teacher meetings.
- Regular feedback obtained from communities to further improve the program.

- Improved bonding between students through annual picnics and celebration of festivals.
- Accessible, affordable, and efficient education with a goal to reach the unreached.

The purpose of EOW program is to improve participation rates in non-formal education, quality teaching, improve completion rates, reduce drop-off, and provide opportunity for formal education. Sukarya's processes for measuring program impact not only align with some indicators for education related SDG (SDG-4), but also deliver on improving access. To further scale up the program, Sukarya has been looking for partnering with interested organizations.

### SUKARYA'S VISION

As gender equality and education gain importance for their role in economic and overall development, there is a need for consistent support for a sustainable program enabling every underprivileged adolescent girl to be healthy, skilled, and trained for employability. In addition to the above-mentioned programs, Sukarya has been working in women empowerment, and providing quality healthcare services. Sukarya's vision is to enable local communities believe in their own abilities to bring about change by providing them access to basic healthcare, nutrition, and education to live a healthy successful life and strive for a better society.

## CHILD EMPOWERMENT PROJECT

## “A High-Impact Relationship”: Robert Kalulu of CEP Uganda Speaks on his Experience with Pangea Giving

By Aneesh Chatterjee, Photography by Child Empowerment Project

**Pangea Giving**, the newest program of Global Washington born from a merger of the two organizations completed on August 1, 2023, is a Seattle-based philanthropic initiative founded in 2003 with the goal of providing financial support and guidance to growing humanitarian organizations in the Global South. Pangea Giving’s unique model allows donating members to become directly involved in grantmaking decisions by joining regional committees, or **Pods**, which oversee operations in Guatemala, Mexico, Kenya, Uganda, Myanmar, Laos and Cambodia. For 2023, Pangea Giving **announced grants** totaling \$114,000 to fifteen beneficiaries across Southeast Asia, Latin America, and East Africa.

One of these grantees, **Child Empowerment Programme Uganda**, is slated to receive \$9500 in 2023 alongside guidance and support for their local operations. We spoke with CEP Uganda’s Executive Director, Robert Kalulu, on their experience as a beneficiary of Pangea Giving.

### **Please introduce yourself and your organization. What is CEP Uganda’s mission, and what are some projects that best represent your organization’s work?**

Thank you. My name is Robert Kalulu. I am the Executive Director for Child Empowerment Programme Uganda, a local community-based organization here in the Kamuli District in eastern Uganda.

Our mission is to empower disadvantaged children – especially girls – to reach their full potential, to live happily, respectably and productively. We do this by increasing access to quality education, economic empowerment for women, mentorship programs for adolescent girls and

access to basic health services. We run Orion Junior School, where we support 162 children. This is funded by small community contributions from our beneficiaries whom we charge an equivalent of two hen (\$12) per school term.

If we find that they can’t afford it, this is not a reason for their exemption from school. We also have a work program, where those that do not have anything to pay but can sacrifice hours of work can bring that to the school. We monetize their services as part of the community’s contributions. We also run the YANA Community High School on the same basis, where we support 367 girls and boys, including 20 girls per year who are involved in vocational training and economic empowerment.

We try to increase options for income generation, especially for widows and disadvantaged women who have children to support. We help them generate income and access credit. We encourage them to start and run sustainable businesses under our mentorship. We strive as much as possible to promote the significance girl child involving them in activities that raise their esteem, promoting income generation and involving them in celebrations like the International Day of the Girl Child, where they get involved in activities with their peers from other schools.

To promote health and access to basic services, we partner with the government and other entities and promote community health to raise awareness on emerging community health issues, we strive to help our beneficiaries access basic health services and sometimes for very complicated cases. For example, we had two children with congenital disorders that we helped to address.

### **What was Pangea Giving’s vetting process? How long did the process take, and what steps were taken by Pangea Giving to evaluate CEP Uganda as a potential beneficiary?**

Pangea has a very interesting vetting process. It begins with a very thoughtful review and discussion. Leaders elected by Pangea will determine whether the organization needs to enroll other partners or not. Once it is clear that they need one, Pangea looks into recommendations from local and international organizations who are working in the region. Pangea will take up the recommendations and request profiles of prospective beneficiaries. These entail the history, mission and goals of these organizations, including a detailed look at the board and staff. The next step is a site visit, if possible and if they are convinced after the visit, that you are an organization that can benefit from their grant program, then they will give you an invitation for an application.



Students at an assembly at Orion Junior School.



This invitation is not a guarantee that you will win the grant. Another part of their vetting process is a critical look at what you plan, whether it makes any sense or not. If you're lucky and you win a grant, then you stand a chance of working with Pangea for 5-7 years.

The length of the vetting process varies, depending on how much time it takes for them to build a relationship with you and understand you.

### **What are the strategies, resources and tactics that Pangea Giving has provided CEP Uganda?**

We have received financial support from Pangea. We've been able to fund our activities and projects, and met the needs of our communities. We have also been able to enjoy sessions of peer learning where all leaders of organizations funded by Pangea come together annually to share, learn from one another and network. These networks have helped small grassroots organizations to grow.

I did not join charity work as a professional, but out of the needs of the community. I dropped my teaching career to intervene for the community. Therefore, I needed to learn so many basic skills in running an organization, but it would be very expensive to hire persons with the required skills, or to enroll at university since we do not have a slot for that on our budget. But through networking like this, we share knowledge and foster learning, which has enriched our stock of knowledge as grantees of Pangea.

### **How has CEP Uganda benefited from these services and strategies? What progress has been made as a result of the partnership with Pangea Giving?**

Pangea has helped to fund and revive our vocational school. In Uganda, we've adopted a new curriculum where much of the learning is practical. At this time, our vocational school will not only take care of the school girls who have dropped out of school, but the entire formal secondary school system; we are looking at expanding the vocational school to benefit the community as a whole. This revival was possible due to funding from Pangea.

We had challenges accessing the internet where we would have to travel over 12 kilometers from home to use internet cafes in town. Thanks to Pangea's funding, we now have internet access in the school itself. Teachers can research from within without having to go elsewhere, which has greatly reduced our expenses, improved teaching and the quality of teaching materials.

Pangea also funded the purchase of motorcycles which we used during Covid to access learners in the community. It was not very easy for many students to converge and conduct a usual large class because the standard then was to minimize social. So we organized classes in their local communities and the motorcycles helped us so much in transporting teachers to community-organized classes.



Practical chemistry lesson at Yana Community High School.

Pangea also helped in leadership development. I communicated earlier that organizations are able to meet and share knowledge – this is due to the East African Leaders' Forum that Pangea funds every year. Recently we had one in Kenya, and it was so enriching. We generate answers to questions relating to challenges that our communities go through, compare notes, solve them internally, and grow through these forums.

We also created new networks, which have been so beneficial for further shared learning and resource mobilization.

**Now a program of Global Washington, Pangea Giving aims to broaden their reach through this merger, expand their circle of members and grantees, and build engaging support networks for impactful, pioneering organizations like CEP Uganda, working to address inequalities across the Global South.**

We have received extra funding from other organizations through these networks. CEP Uganda adopted the idea of table banking from Dandelion and common ground for Africa. The idea fosters savings and peer learning and the two organization are part of our network of East African partners of Pangea.

**How does CEP Uganda envision the future of their partnership with Pangea Giving? What are some of the long-term goals?**

As I pointed out earlier, support from Pangea can range from 5-7 years. CEP Uganda's relationship with Pangea is to end next year. We've been with Pangea for 6 years and I am very glad that Pangea took time to prepare us. Despite the need for more resources, at least we can understand that other organizations need the kind of support that Pangea offers and we are prepared to give way to other organizations to benefit from these grants. I'm happy that we have had the opportunity to be supported by an organization like Pangea.

We shall continue benefiting from the guidance, learning and sharing of experience through the forum for the leaders and may connect personally with the pod leaders. Pangea has widened our network and they are open to recommending us to other organizations. I think this is very sustainable, and I love this about them. I want to say that I am happy about being one of Pangea's grantees. Since joining them, despite the interruption of Covid, they have moved us a big step from where we were. We continue receiving guidance and recommendations, and this is another thing that makes me joyful about my relationship with Pangea. I don't regret being part of the team. Thank you for the opportunity to share this with you, and God bless you.

**CHILDREN EMPOWERMENT PROGRAM REFLECTIONS BY MARYANN NESS AND ROBIN RICE, PANGEA GIVING AFRICA POD MEMBERS:**

Robert is a highly responsive leader. We have been very impressed with his ability to adjust priorities in times of both crisis and the simple reality of inadequate resources to meet the needs of his community, all with amazing detail to what makes systems work.

Faced with his government's lock down of schools and restriction of public gatherings due to Covid, Robert wrote us immediately to request permission to repurpose his grant to meet the emergency.

Within months, over 5,000 masks were sewn by young women trained in CEP's YANA Technical School and were distributed to the most at risk, including women vegetable vendors in trading centers and health workers.

With motorbikes for staff, and using a public address system, 20,000 people were reached at trading centers to address misinformation about Covid and government mandated strictures. More were reached by cooperating radio stations.

CEP provided 68 hand wash stations in 44 trading centers with a caretaker assigned to ensure water and soap at all times.

The following year, with Pangea support, CEP's school developed an internet center to enable online learning and communication with students who were quarantined.

Over the years, we have learned that outstanding leaders like Robert are critical to the creation of excellent community development organizations. His vision, adaptability, persistence, and hope are making a remarkable difference in the development of many youth and women in a largely neglected rural area.



Students of the hairdressing class at Yana Community High School.



## ASHESI UNIVERSITY

## A New Kind of Compass: Ashesi University's Growing Vision for Education in Africa

By Amber Cortes, Photography by Ashesi University

It's a complicated world, and it just gets more complex every day. Moral ambiguity abounds. Reliable sources are hard to come by. It's easy to get lost. The next generation of graduates is faced with making sense of a world saturated with diverse perspectives and conflicting narratives.

**Ashesi University**, a one-of-a kind private, non-profit university in Ghana, is responding by growing programs that incorporate entrepreneurial thinking and leadership training with the goal of giving students the skills to tackle contemporary problems with innovative solutions.

And a moral backbone.

"The focus on ethics is incredibly foundational to Ashesi," says Megan Hastings, the Ashesi Foundation's Senior Director of Strategic Partnerships "even though there are some courses that give students tools for ethical action, ethics is imbued across our entire curriculum and the student experience."

The University has a multidisciplinary curriculum that helps students develop understanding of their society, and their responsibility to it. For example, explains Hastings, "ensuring that if you're going to be an engineer, you have endeavored to explore why and how society got to where it is and what the problems are being faced in your community. And hopefully building an awareness of the role that you and your work can play in solving them."

Ashesi, which means "beginning" in Akan, a local Ghanaian language, was founded by Patrick Awuah in 1999, who brought both his educational experience at Swarthmore College and his professional experience at Microsoft to the table when designing the social enterprise model of Ashesi. The University started classes in 2002, with 30 students.

The university has a commitment to diversity with a focus on Africa. Today, the campus has 1418 students enrolled from 24 African countries, and 47% are women.

"Something that's super special about Ashesi is having students from across the continent, but also massive



Ashesi University, Ghana.

diversity in economic status, with 50% of our students are on scholarship,” says Hastings.

As it begins its third decade, Ashesi is enriching its educational programming to look at what the next generation could be facing. According to the [World Bank](#), the population of young people aged 15-24 in Africa is projected to reach 500 million in 2080.

What will the reality on the continent be when it comes to massive population boom, trade, climate change impacts, more potential pandemics, and growing healthcare needs amid a rise in the use of AI and other technology?

“So the next tranche of programs is really designed to catalyze talent, leadership, and knowledge creation in those areas,” says Hastings.

Plans include the addition of majors in Computer Science with a focus on Machine Learning, Data Science and Cybersecurity; new Engineering majors focused on synthetic biology and manufacturing; and Economics and Law programmes focused on giving students tools for more public sector leadership. For now, Ashesi is starting by putting [climate awareness](#) at the center—integrating climate issues and solutions across all curriculums and majors.

“We’re evaluating every single course and field of study to apply a climate lens to ensure that our students graduate with deep awareness and understanding of how their work is going to impact climate for good or for bad,” says Hastings.

The University also hosts the Ghana Climate Innovation Centre, which is investing in small businesses and startups that are focused on solutions for climate adaptation and resilience. They’re also leading by example by committing to 60% solar energy on campus.

“Ashesi commits to doing things that are not the status quo, and energy efficiency on campus is a big piece of that,” says Hastings.

Ashesi is just one university: in order to radically strengthen educational paradigms, they can’t go at it alone. That’s why, six years ago, Ashesi formed the [Education Collaborative](#), a growing network of higher education institutions in sub-Saharan Africa focused on collectively improving outcomes for students on the continent. The University want to open source their educational models and show what’s possible, and also showcase and elevate other institutions that are doing great work so all could learn from best practices.

This last year, the Education Collaborative worked with the Times Higher Education (THE) to create a Sub Saharan African university [ranking system](#) that took into account the sort of nuances and the accountability that has been lacking in the system: things like how many of graduates are getting jobs, student engagement, access to resources and the impact of academic research. 88 universities participated.

Introducing a mechanism for accountability, and then a support network, helps institutions actually make improvements—and track them through standardized metrics.

“We are really starting to see systems change level work through how that is affecting institutions ability to address things in terms of policy and collaborative approaches, regionally,” explains Hastings.

“For instance, if you get several major public and private universities in East Africa working together, there’s a lot that can be done from a regulatory standpoint that one university isn’t going to be able to move the needle on alone.”

Ashesi University’s dynamism and ever-evolving response to the growing challenges of the world, along with their contributions towards uplifting other groups and institutions across Africa, means that needle will keep moving—and in doing so, Ashesi will continue to create positive change that extends far beyond its campus borders.





# GlobalWA Member Directory

## A CHILD'S NOTEBOOK ●

All children deserve a quality education. A Child's Notebook partners with local communities and invests in the lives of children in Southeast Asia.

[achildsnotebook.org](http://achildsnotebook.org)

## ACT FOR CONGO ●

ACT for Congo strengthens without creating dependence. It helps Congolese organizations extend their capacity and credibility through mutual respect, experience, and knowledge. They lead, ACT for Congo consults. Present partner is AGIR RDC, which provides vocational training, life skills and emergency relief to internally displaced people in North Kivu, DRC.

[actforcongo.org](http://actforcongo.org)

## ADARA DEVELOPMENT ●

Adara Development's mission is to bridge the world of business and the world of people in extreme poverty, and to support vulnerable communities with health, education, and other essential services. Adara Development has expertise in maternal, newborn and child health, and remote community development. Adara Development reaches 70,000+ people living in poverty each year and countless others through knowledge sharing.

[adaragroup.org](http://adaragroup.org)

## AFRICAN CHAMBER OF COMMERCE

Africa Chamber of Commerce promotes bilateral trade and investment relationships between Africa and the Pacific Northwest of the United States.

[africanchamberofcommercepnw.com](http://africanchamberofcommercepnw.com)

## AGROS INTERNATIONAL ●

Working with farming families in rural Latin America, Agros International breaks the cycle of poverty through economic and social development. Creating paths from poverty to prosperity, Agros accelerates opportunities for land ownership, market-led agriculture, financial empowerment, and health training. Over 20,000 people in five countries have advanced out of poverty and now own title to land, homes, and profitable businesses.

[agros.org](http://agros.org)

## ALLIANCE FOR CHILDREN EVERYWHERE ●

Alliance for Children Everywhere (ACE) helps Zambian caregivers raise safe kids, grow strong families, and build sustainable communities. Our U.S.-based team supports Zambian-led programs as ACE Zambia, an internationally recognized leader in family-based programs and child welfare within Southern Africa. We also provide consulting services in Southern Africa as ACE Transition Partners for institutions seeking to transition to family-based care.

[childreneverywhere.org](http://childreneverywhere.org)

## AMAZON

Amazon's disaster relief and response efforts utilize its global logistics capabilities to provide the fastest, most effective aid. These strengths allow to ship Amazon and partner-donated items to communities as soon as possible after a natural disaster. Since 2017, Amazon has donated more than 15 million relief items to support people impacted by over 70 natural disasters around the world.

[amazon.com](http://amazon.com)

## AMERICARES ●

Americares saves lives and improves health for people affected by poverty or disaster so they can reach their full potential.

[americares.org](http://americares.org)

## AMPLIO ●

Amplio's mission is to empower the world's most vulnerable communities through knowledge sharing. Amplio offers equitable, gender-sensitive technology and program services for social impact in underserved communities globally. Maker of the Amplio Talking Book.

[amplio.org](http://amplio.org)

## APCO WORLDWIDE

APCO Worldwide is the largest woman-founded and employee-owned strategy and communications firm in the world, with more than 900 employees in over 30 global markets. APCO Impact sits within APCO Worldwide and supports clients across sectors be catalysts for progress and address the key issues of our time, including climate and sustainability, racial and gender equity, and social justice.

[apcoworldwide.com](http://apcoworldwide.com)

## ASHESI UNIVERSITY FOUNDATION ●

Ashesi is a world-class university in Ghana focused on cultivating ethical, entrepreneurial leaders who will be catalysts for systemic social and economic change in Africa. Ashesi University Foundation in Seattle mobilizes global support for Ashesi University.

[ashesi.org](http://ashesi.org)

## AWAMAKI ●

Awamaki is a community-driven social enterprise working in deep collaboration with Quechua artisans in Peru. Together we create grassroots programs to support and grow women-led cooperatives through heritage textiles, market access, and sustainable tourism.

[awamaki.org](http://awamaki.org)

## BILL & MELINDA GATES FOUNDATION

Guided by the belief that every life has equal value, the Bill & Melinda Gates Foundation aspires to help all people lead healthy, productive lives. The foundation is dedicated to discovering and disseminating innovative approaches to addressing extreme poverty and poor health in developing countries and improving the U.S. education system.

[gatesfoundation.org](http://gatesfoundation.org)

**BUILDON** ●

buildOn's mission is to break the cycle of poverty, illiteracy, and low expectations through service and education. Through a community participatory model, buildOn has mobilized communities to construct more than 1,700 schools. buildOn's agreement with each community ensures that 50% of students are girls. buildOn is currently building schools in Burkina Faso, Guatemala, Haiti, Malawi, Mali, Nepal, Nicaragua, and Senegal.

[buildon.org](https://buildon.org)

**BURKITT'S LYMPHOMA FUND FOR AFRICA** ●

Burkitt's Lymphoma Fund for Africa is a Seattle-based non-profit overcoming the barriers to care for pediatric cancer patients and their families in sub-Saharan Africa. With multiple African and US-based partners, BLFA funds programs that support the medical, social, economic, and logistical needs of families to reduce treatment abandonment and increase survival rates.

[blfundafrica.org](https://blfundafrica.org)

**CAPRIA VENTURES LLC**

Capria Ventures invests in early-stage and early-growth tech startups in high-impact sectors across the Global South, applying Generative AI to deliver local solutions at scale to meet the essential needs of the aspiring middle class.

[capria.vc](https://capria.vc)

**CARE** ●

CARE is a global leader within a worldwide movement dedicated to ending poverty and achieving social justice for all. CARE works in 93 countries, reaching millions of people around the world through programs which provide emergency help during times of crisis and longer-term development programs that help pave pathways out of poverty to healthier, more secure futures.

[care.org](https://care.org)

**CHANDLER FOUNDATION**

Chandler Foundation seeks to grow prosperity in the Global South by promoting good governance and smart policies that drive systems-level, long-term change.

[chandlerfoundation.org](https://chandlerfoundation.org)

**CHILDFUND INTERNATIONAL** ●

ChildFund International protects children in vulnerable circumstances, reaching over 20 million people in 23 countries every year. With 85 years of experience, ChildFund has unique insight into the challenges faced by young people, as well as the experience, networks, and innovative solutions to address them — ensuring that children are healthy, educated, safe, and prepared for a bright future.

[childfund.org](https://childfund.org)

**CLEANTECH ALLIANCE**

CleanTech Alliance represents more than 300 member companies and organizations in ten states and three provinces. Founded in 2007 by business and cleantech leaders, the Alliance facilitates the generation and growth of cleantech companies and jobs through a variety of educational programs, research, products, and services.

[cleantechalliance.org](https://cleantechalliance.org)

**COEVOLUTION, A SOCIAL PURPOSE CORPORATION**

Coevolution is a leadership and team development consultancy. Coevolution's vision is to inspire leaders of all ages, their teams (and society at large) to feel energized by shaping the future, not letting the future shape them. To welcome change as fuel for their continuous evolution. To bring a beginner's mind and generative curiosity to the process. To rediscover coevolution.

[ourcoevolution.com](https://ourcoevolution.com)

**COMMITTEE FOR CHILDREN** ●

Known for our social-emotional learning programs and resources that blend innovation and research, Committee for Children champions the well-being of children through international and domestic initiatives. Founded in 1979, we work to advance children's opportunities to thrive through research, resource development, building alliances and advocating for education policy change.

[cfchildren.org](https://cfchildren.org)

**CONCERN WORLDWIDE US** ●

Concern Worldwide US is a global community who share a common vision of a world where no one lives in poverty, fear, or oppression; and all can exercise their rights to a decent standard of living, have access to the opportunities and choices essential to a long, healthy, and creative life, and can be treated with dignity and respect.

[concernusa.org](https://concernusa.org)

**CONSTRUCTION FOR CHANGE** ●

Construction for Change partners with nonprofit organizations to build spaces where people can become healthier, better educated, and increase economic mobility.

[constructionforchange.org](https://constructionforchange.org)

**CORE GROUP** ●

CORE Group convenes global community health professionals to share knowledge, evidence, and best practices, and then translates these into the real world with a direct impact.

[coregroup.org](https://coregroup.org)

**COVENANT HOUSE INTERNATIONAL** ●

Covenant House International builds a bridge to hope for young people facing homelessness and survivors of trafficking through unconditional love, absolute respect, and relentless support. Its doors are open 24/7 in 34 cities across five countries: Guatemala, Honduras, Mexico, Canada, and the U.S. Its holistic programs empower young people to rise and overcome adversity, today and in the future.

[covenanthouse.org](https://covenanthouse.org)

**DALBERG ADVISORS**

Dalberg is a global group working to build a more inclusive and sustainable world where all people, everywhere, can reach their fullest potential. They are the largest impact-first advisory firm globally with over 500 staff primarily in the Global South, and they support philanthropies, companies, and governments to develop strategies, design programs, identify opportunities, and lead organizational transformation.

[dalberg.com](https://dalberg.com)

● 501(c)(3) non-profit organization





## Sukarya's Education on Wheels brings hope to the slums of Delhi.

Photo: Joel Meyers

### DE DESIGN + ENVIRONMENT

Design and Environment is a specialized eco-consultancy and design atelier that works with Governments, NGOs, and leading corporations world-wide.

[design-environment.com](https://design-environment.com)

### DELTA AIR LINES

Delta Air Lines operates over 5,400 flights daily and serves 325 destinations in 52 countries on six continents. Delta's charitable giving program – marking \$50.5 million in 2022 – adjusts to meet ongoing societal needs, from dedicated programs to protect the environment, pursue equity and expand education to relief support in natural disasters, humanitarian crises and health emergencies.

[esghub.delta.com/charitable-giving](https://esghub.delta.com/charitable-giving)

### DIVERSITY TRAVEL

Diversity Travel is the leading travel management company supporting the unique and complex travel needs of global non-profits with expert advice, high touch service, and specialist airfares alongside market-leading risk management and duty of care technology.

[diversitytravel.com](https://diversitytravel.com)

### EARTHWORM FOUNDATION ●

Earthworm leverages global value chains to regenerate the world.

[earthworm.org](https://earthworm.org)

### EMIRATES

Emirates is an award-winning airline with state-of-the-art fleet and unrivaled service connecting people and cultures in over 160 destinations worldwide. Its subsidiary organization, the Emirates Airline Foundation is a non-profit charity organization which aims to improve the quality of life for children, regardless of geographical, political, or religious boundaries.

[emirates.com](https://emirates.com)

### EVERY WOMAN TREATY ●

Every Woman Treaty is a coalition of 3,000+ women's rights activists in 147 countries advancing an Optional Protocol to CEDAW dedicated to ending violence against women and girls. A world in which women and girls are free from violence is possible and the surest path is a Protocol that codifies ending violence against women and girls into binding law.

[everywoman.org](https://everywoman.org)

### FIUTS (FOUNDATION FOR INTERNATIONAL UNDERSTANDING THROUGH STUDENTS) ●

FIUTS advances international understanding through cross-cultural experiences, student leadership, and community connections. Founded at the University of Washington in 1948, FIUTS programs connect international and American students from universities across our region with individuals and organizations to promote dialogue and cultural exchange.

[fiuts.org](https://fiuts.org)

### FRED HUTCHINSON CANCER CENTER ●

Fred Hutchinson Cancer Center unites innovative research and compassionate care to prevent and eliminate cancer and infectious disease. We're driven by the urgency of our patients, the hope of our community and our passion for discovery to pursue scientific breakthroughs and healthier lives for every person in every community.

[fredhutch.org](https://fredhutch.org)

### FRIENDLY WATER FOR THE WORLD ●

Friendly Water for the World expands global access to low-cost clean water technologies and information about health and sanitation through knowledge-sharing, training, community-building, peacemaking, and sustainability. It empowers communities abroad to take care of their own clean water needs.

[friendlywater.org](https://friendlywater.org)

● 501(c)(3) non-profit organization



A girl working on a lesson with Education on Wheels

Photo: Sukarya

### FSC INVESTMENTS & PARTNERSHIPS ●

FSC Investments and Partnerships (FSC I&P) promotes environmentally appropriate, socially beneficial, and economically viable management of the world's forests.

[fsc.org/donate](https://fsc.org/donate)

### FUTURE OF FISH ●

Future of Fish is an international nonprofit that works to transform at-risk communities into thriving centers of coastal sustainability that can serve as replicable models for a just and blue economy. It knows that one organization cannot shift the system alone. Their approach focuses on deep collaborations with the community, industry, investors, NGOs, and government, co-designing solutions for complex problems.

[futureoffish.org](https://futureoffish.org)

### GARGAAR RELIEF DEVELOPMENT ORGANIZATION (GREDO)

GREDO's mission is to improve the living standards of the served communities by delivering effective Emergency Response, Resilience interventions, promoting local capacities and resources, and sustainable development interventions in partnership with stakeholders.

[gredosom.org](https://gredosom.org)

### GIVE2ASIA ●

Based in the San Francisco Bay Area, Give2Asia is an international nonprofit that serves as a strategic partner and ally working on the ground in more than 30+ countries across the Asia Pacific and the Middle East. Its role is to strengthen the work of local organizations and mobilize support through philanthropic giving from Individuals, Family Foundations, and Corporations.

[give2asia.org](https://give2asia.org)

### GLOBAL IMPACT ●

Global Impact works on charitable ventures to inspire greater giving. It serves as a trusted advisor, and an intermediary and implementing partner across the private, nonprofit, and public sectors. Through these partnerships, it has raised \$2 billion to address issues around poverty and global development. Its expertise includes fundraising and partnerships, employee engagement and CSR, and finance and business services.

[charity.org](https://charity.org)

### GLOBAL LEADERSHIP FORUM ●

The Global Leadership Forum strengthens globally oriented social-purpose leaders through a peer cohort program that addresses leadership, management, and organizational development topics. In this trusting peer community, creative problem solving and real-time application of topics results in personal and organizational growth and development. Alumni form an enduring community who support each other to improve lives in communities worldwide.

[glfglobal.org](https://glfglobal.org)

### GLOBAL MENTORSHIP INITIATIVE ●

Global Mentorship Initiative helps underrepresented and refugee students in 92 countries to get their first job after graduation. This is accomplished through a structured, online mentorship, enhanced through the power of AI.

[globalmentorship.org](https://globalmentorship.org)

### GLOBAL PARTNERSHIPS ●

Global Partnerships (GP) is an impact-first investment fund manager dedicated to expanding opportunity for people living in poverty. GP-affiliated funds invest in sustainable solutions that empower people in Latin America, the Caribbean, and sub-Saharan Africa to earn a living, provide basic necessities for their families, and improve their lives.

[globalpartnerships.org](https://globalpartnerships.org)

### GLOBAL RIGHTS ADVOCACY ●

Global Rights Advocacy's mission is to provide victims access to international human rights mechanisms through high quality legal defense and advocacy. strategies

[globalrightsadvocacy.org](https://globalrightsadvocacy.org)

● 501(c)(3) non-profit organization



**GOODCITIZEN**

GoodCitizen is a B Corps that provides executive search and leadership advisory services to mission-driven organizations. The pressing challenges in our communities and around the world – and the best ideas for addressing them – converge on questions of leadership. GoodCitizen exists to help social sector organizations build leadership teams that can make a difference and drive change.

[goodcitizen.com](https://goodcitizen.com)

**GROW FURTHER** ●

Grow Further creates ways for farmers, scientists, and people around the world to work together in pursuit of global food security in the face of climate change. By joining forces with Grow Further, you'll be supporting research and development projects focused on improving nutrition, adapting to a changing climate, and fostering sustainable livelihoods for smallholder farmers.

[growfurther.org](https://growfurther.org)

**GSBA, WASHINGTON STATE'S LGBTQ & ALLIED CHAMBER OF COMMERCE** ●

GSBA, Washington State's LGBTQ & Allied Chamber of Commerce's mission is to combine business development, leadership, and social action to expand economic opportunities for the Lesbian, Gay, Bisexual, and Transgender community and those who support equality for all. It envisions a vibrant global economy strengthened through the full participation of diverse local communities.

[thegsba.org](https://thegsba.org)

**HEIFER INTERNATIONAL** ●

Heifer International is on a mission to end hunger and poverty, while caring for the Earth. For 78 years, Heifer International has worked with 39.8 million families to build sustainable food and farming businesses that strengthen rural economies and put people on the pathway to a living income.

[heifer.org](https://heifer.org)

**HUNGER PROJECT** ●

The Hunger Project is an organization committed to the sustainable end of world hunger. It has ongoing programs in Africa, Asia, and Latin America, where it implements programs aimed at mobilizing rural grassroots communities to achieve sustainable progress in health, education, nutrition, and family income.

[thp.org](https://thp.org)

**INTERNATIONAL RESCUE COMMITTEE** ●

The International Rescue Committee (IRC) helps people in 40+ countries whose lives and livelihoods are shattered by conflict and disaster to survive, recover, and gain control of their future. Since 1976, the IRC in Seattle has helped thousands of refugees, immigrants, and survivors of human trafficking to rebuild their lives in Washington State.

[rescue.org/seattle](https://rescue.org/seattle)

**JEWISH HUMANITARIAN RESPONSE** ●

JHR has been active since August 2021, providing relief, rescue, and resettlement to vulnerable Afghans facing inhumane living conditions and threats under the Taliban.

[jhr.ngo](https://jhr.ngo)

● 501(c)(3) non-profit organization

**KATI COLLECTIVE**

Kati Collective is a global consulting collaborative focused on understanding, analyzing, and advancing equality. Kati believes that many perspectives – both global and local – need to come together for impactful and lasting systemic change. With experts located across the globe, Kati offers customized approaches to client needs for strategy development, evaluation, process management, and co-creation with local organizations.

[katicollective.com](https://katicollective.com)

**LANDESA** ●

Landesa advances pro-poor, gender-sensitive land rights reforms through law and policy tools. These reforms have helped alleviate poverty, reduce hunger, and ease conflict over land for more than 180 million families. Secure rights to land boost agricultural productivity, improve health, nutrition and school enrollment, and have placed billions of dollars in new land wealth in the hands of rural people.

[landesa.org](https://landesa.org)

**LAU FOUNDATION** ●

The mission of the Lau Foundation is to create K-12 learning opportunities and supporting educational programs to build a better and peaceful community.

[laucare.org](https://laucare.org)

**LIFE SCIENCE WASHINGTON** ●

Life Science Washington is an independent, non-profit, trade association serving the life sciences industry in WA. As the center of influence for WA life sciences, it advocates for positive public policy and private investment, brings together research institutions, investors, and entrepreneurs to grow its economic sector, and create healthier communities.

[lifesciencewa.org](https://lifesciencewa.org)

**LINKSBRIDGE SPC**

Linksbridge was founded in 2008 to partner with nonprofits whose missions we could think of as our own. Its objective was simple: offer superior service—more imaginative, better informed, better executed—while charging sustainable rates. Fifteen years later, Linksbridge has collaborated with the most effective global health and development actors in the world in a spirit of camaraderie and not commerce.

[linksbridge.com](https://linksbridge.com)

**MALARIA PARTNERS INTERNATIONAL** ●

Malaria Partners International (MPI) was founded and is led by Rotary members committed to inspiring a broad international Rotarian campaign for global elimination of malaria. MPI believes that malaria can be eliminated through a comprehensive Rotarian campaign similar to Rotary's successful Polio Plus campaign.

[malariapartnersinternational.org](https://malariapartnersinternational.org)

**MERCY CORPS** ●

Mercy Corps is a global team of humanitarians working together on the front lines of today's biggest crises to create a future of possibility, where everyone can prosper. We're committed to creating global change through local impact and we bring a comprehensive approach to every challenge, addressing problems from multiple angles.

[mercycorps.org](https://mercycorps.org)

**MICROSOFT**

At Microsoft, the mission is to empower every person and every organization on the planet to achieve more. Delivering on this mission starts with great technology, but great technology alone is not enough. Too many of technology's benefits have yet to reach the people who need them.

[microsoft.com](https://microsoft.com)

**MIFOS INITIATIVE** ●

The Mifos Initiative provides education, training, and tools to enable charitable organizations and social enterprises to make financial inclusion more affordable, available, and accessible to the 2.5 billion unbanked poor in the world.

[mifos.org](https://mifos.org)

**MINERVA STRATEGIES**

Minerva Strategies inspires positive change through smart communication. Minerva Strategies is well connected in the social change sector, with strong expertise in global health and development, and it brings a keen understanding of clients' opportunities and constraints.

[minervastrategies.com](https://minervastrategies.com)

**MISSION AFRICA** ●

Mission Africa aims to empower children and families in the South King County communities of Washington State and, in the remote villages of Africa by providing support in three core areas – education, healthcare and poverty alleviation.

[missionafrica.us](https://missionafrica.us)

**MONA FOUNDATION** ●

Founded in 1999, Mona Foundation supports grassroots initiatives that provide education to all children, empower women and girls, and enable them to transform their own communities. In 2022, our 26 partner organizations enabled the education and empowerment of 1,662,548 students (both in-person and online) in 15 countries including US, Haiti, Panama, Guatemala, Columbia, Brazil, India, Vietnam, China, Mongolia, Gambia, Cameroon, and Sierra Leone.

[monafoundation.org](https://monafoundation.org)

**NATIONAL MUSEUM AND CENTER FOR SERVICE** ●

The National Museum and Center for Service elevates, honors and inspires the spirit of service, celebrating all the ways Americans serve the nation and the world. Through interactive exhibits, experiences and programming, the National Museum and Center for Service inspires future generations and connects visitors to meaningful opportunities to do good, locally, nationally and globally.

[nmcfs.org](https://nmcfs.org)

**NETHOPE** ●

NetHope empowers committed organizations to change the world through the power of technology. This consortium of 65 leading global nonprofits unites with technology companies and funding partners to design, fund, implement, adapt, and scale innovative approaches to solve development, humanitarian, and conservation challenges.

[nethope.org](https://nethope.org)

**NONPROFIT ASSOCIATION OF WASHINGTON** ●

Nonprofit Association of Washington (NAWA) convenes a powerful network of nonprofit organizations across Washington State to learn, advocate, and collaborate, so that nonprofits can achieve their missions.

[nonprofitwa.org](https://nonprofitwa.org)

**OPERATION SNOW LEOPARD** ●

Operation Snow Leopard is a nonprofit led by US military veterans, military spouses, and compassionate citizens focused on evacuation and humanitarian work for our most vulnerable Afghan allies. They seek to partner with other trusted organizations to provide ground support, life support, evacuation, and resettlement options for at risk populations and Afghan allies.

[operationsnowleopard.org](https://operationsnowleopard.org)

**OPPORTUNITY INTERNATIONAL** ●

Opportunity International provides financial solutions and training to empower people living in poverty to transform their lives, their children's futures and their communities.

[opportunity.org](https://opportunity.org)

**OUTRIGHT INTERNATIONAL** ●

Outright International works with partners around the globe to strengthen the capacity of the LGBTIQ human-rights movement, document and amplify human rights violations against LGBTIQ people, and advocate for inclusion and equality. Founded in 1990, with staff in over a dozen countries, Outright works with the United Nations, regional human-rights monitoring bodies, and civil society partners for better LGBTIQ lives.

[outrightinternational.org](https://outrightinternational.org)

**OXFAM AMERICA** ●

Oxfam is a global organization that fights inequality to end poverty and injustice. We offer lifesaving support in times of crisis and advocate for economic justice, gender equality, and climate action. We demand equal rights and equal treatment so that everyone can thrive, not just survive. The future is equal.

[oxfamamerica.org](https://oxfamamerica.org)

**PANORAMA** ●

Panorama is a platform for social change driven by audacious thinking, radical collaboration, and bold action. We help our partners navigate multiple pathways from vision to impact based on their needs.

[panoramaglobal.org](https://panoramaglobal.org)

**PARTNERS ASIA** ●

Partners Asia forges trust-based partnerships with local leaders who are tireless in serving "invisible" populations—refugees, migrants, ethnic minorities, LGBTQI — in Asia; providing small grants for community-led initiatives, technical support, and opportunities for coalition building so that all people can survive and thrive. 20 years of partnerships has proven that local leaders supported with global resources are unstoppable.

[partnersasia.org](https://partnersasia.org)



**PATH** ●

PATH is a global team of innovators working to accelerate health equity so all people and communities can thrive. It advises and partners with public institutions, businesses, grassroots groups, and investors to solve the world's most pressing health challenges.

[path.org](https://path.org)

**PATH FROM POVERTY** ●

Path From Poverty reaches across cultures to transform lives and communities by partnering with women's groups; empowering and equipping women to break the cycle of poverty and live into their God-given potential, irrespective of their spiritual beliefs.

[pathfrompoverty.org](https://pathfrompoverty.org)

**PEACETREES VIETNAM** ●

PeaceTrees Vietnam is dedicated to addressing the legacy of the U.S.–Vietnam War through mine action, community assistance, and citizen diplomacy. In partnership with Vietnamese leadership and local communities, PeaceTrees safely clears land of explosive remnants of war and supports community-led education and economic development initiatives so that future generations can thrive.

[peacetreesvietnam.org](https://peacetreesvietnam.org)

**PERENNIAL** ●

Perennial's work sits at the intersection of leadership, social justice, and human development. Its mission is to support global social leaders in rejuvenating and sustaining themselves within the frameworks of their communities, leadership roles, causes, and personal lives. A leader's skill lies in their capacity to resonate internally with their purpose and externally with the individuals and communities they serve.

[perennial.org](https://perennial.org)

**PHILANTHROPY NORTHWEST** ●

Philanthropy Northwest is the network for philanthropists of all types who are committed to Alaska, Idaho, Montana, Oregon, Washington, and Wyoming. Philanthropy Northwest promotes, facilitates, and drives collaborative action by community investors to build resilient, equitable, and inclusive communities.

[philanthropynw.org](https://philanthropynw.org)

**PLANNED PARENTHOOD GREAT NORTHWEST, HAWAII, ALASKA, KENTUCKY (PPGNHAIK)** ●

PPGNHAIK draws upon its expertise as a leading provider of sexual and reproductive health services and comprehensive sexuality education to deliver capacity building support to partner organizations in low- and middle-income countries. Through these partnerships, PPGNHAIK's Global Programs department supports efforts to improve sexual and reproductive health outcomes for young people.

[ppgnhaik.org](https://ppgnhaik.org)

● 501(c)(3) non-profit organization

**PROVIDENCE GLOBAL PROGRAMS** ●

Since 2012, Providence Global Program has partnered to make health system impact through programs, fiscal support and service that honor the leadership, expertise, and goals of communities around the globe. We live our vision of health for a better world by working through local partnerships to redress the health inequities created by colonialism.

[tinyurl.com/ProvidencePrograms](https://tinyurl.com/ProvidencePrograms)

**PYGMY SURVIVAL ALLIANCE** ●

Pygmy Survival Alliance is a nonprofit organization that connects pygmy villages in Rwanda with information, leadership, survival and health resources to enable them to transform their health and welfare.

[pygmysurvival.org](https://pygmysurvival.org)

**RAINMAKERSTV** ●

RainmakersTV is a documentary series established to communicate stories of leadership, innovation and social responsibility that inspire global transformation.

[rainmakers.tv](https://rainmakers.tv)

**REMOTE ENERGY** ●

Remote Energy provides customized solar electric curriculum development, training, and educational programs. It partners with organizations looking to use renewable energy to address issues relating to jobs, health, clean water, education, gender equality, and poverty.

[remoteenergy.org](https://remoteenergy.org)



## Sukarya Gender Equality Program for Adolescent Girls.

Photo: Sukarya

### RESONANCE

Solving the SDGs will require many organizations working together to drive change. Resonance is a global social impact consultancy working with companies, donors, foundations, and NGOs to solve global development and corporate sustainability challenges cross-sector collaboration. Resonance literally wrote the book on partnerships and has helped clients deliver transformative results in more than 300 partnerships in 60 countries.

[resonanceglobal.com](https://resonanceglobal.com)

### RESULTS EDUCATIONAL FUND

RESULTS is a movement of passionate, committed everyday people who use their voices to influence political decisions that will bring an end to poverty.

[results.org](https://results.org)

### RISE BEYOND THE REEF

Rise Beyond the Reef's mission is to help remote Pacific Island communities rise.

[risebeyondthereef.org](https://risebeyondthereef.org)

### ROTARY DISTRICT 5030

Rotary District 5030, encompassing Seattle and surrounding communities, is committed to fellowship and creating lasting change. In the last two years, District 5030 partnered with worldwide Rotary Districts, Foundations, and other institutions to fund \$3,000,000 for grants in 19 countries. In addition, they are the lead in a \$2,000,000 grant awarded for Malaria Prevention and Treatment Projects.

[rotarydistrict5030.org](https://rotarydistrict5030.org)

### RWANDA GIRLS INITIATIVE

Rwanda Girls Initiative's (RGI) mission is to educate and empower girls in Rwanda. RGI opened Gashora Girls Academy of Science and Technology as an innovative and socio-economically diverse upper-secondary school, combining college prep academics with leadership training, designed to cultivate leaders with a love of learning and a sense of economic empowerment to strengthen their communities.

[rwandagirlsinitiative.org](https://rwandagirlsinitiative.org)

### SAHAR EDUCATION FOR AFGHAN GIRLS

Sahar's mission is to create educational opportunities in Afghanistan that empower and inspire children and their families build peaceful, thriving communities. We achieve our mission by building schools and designing educational programs that address the key barriers to accessing and completing education for girls. Sahar partners with the Afghan Ministry of Education and Afghan-based organizations.

[sahareducation.org](https://sahareducation.org)

### SAVE KIDS TRUST

SKT India provides healthcare to numerous slum communities in Jaipur India. At SKT US, we help with fundraising, web and admin support.

[savekidstrust.org](https://savekidstrust.org)

### SCHOOLS FOR SALONE

Schools for Salone's mission is to advance quality education in Sierra Leone through local partnerships. Schools for Salone works alongside Sierra Leonean partners to build schools, train teachers, empower girls, and equip students to stay in school and achieve their dreams. Schools for Salone has built 42 school buildings and 3 libraries and served 27,386 students since 2005.

[schoolsforalone.org](https://schoolsforalone.org)

● 501(c)(3) non-profit organization



**SE ASIA FOUNDATION** ●

The SE Asia Foundation's mission is to "Eliminate Poverty by Providing for the Education and Wellbeing of Girls and Women". They partner with local, grassroots non-government organizations to provide both funding and coaching to improve the sustainability of those organizations.

[seafund.org](https://seafund.org)

**SEATTLE AQUARIUM** ●

The Seattle Aquarium is a respected authority on the Salish Sea, Washington coast, and Pacific Ocean, and serves as the largest platform for ocean conservation in the Pacific Northwest. Guided by its mission of Inspiring Conservation of Our Marine Environment, the Aquarium leads community engagement, field conservation, policy and advocacy and research programs, and reaches ~one million people each year.

[seattleaquarium.org](https://seattleaquarium.org)

**SEATTLE FOUNDATION** ●

Seattle Foundation ignites powerful, rewarding philanthropy to make Greater Seattle a stronger, more vibrant community for all.

[seattlefoundation.org](https://seattlefoundation.org)

**SEATTLE INTERNATIONAL FOUNDATION** ●

Seattle International Foundation's mission is to champion good governance and equity in Central America through rule of law and a robust civil society

[seaif.org](https://seaif.org)

**SEATTLE METROPOLITAN CHAMBER OF COMMERCE**

The Chamber is the largest and most diverse business association in the region representing 2,400 member companies and a workforce of 750,000. As a business advocate, the Chamber is a policy voice representing businesses at the city, regional, state, and federal levels; a convener around a variety of issues; and a one-stop shop for resources and tools businesses need to grow.

[seattlechamber.com](https://seattlechamber.com)

**SEATTLE PACIFIC UNIVERSITY** ●

Seattle Pacific University seeks to be a premier Christian University fully committed to engaging the culture and changing the world by graduating people of competence and character, becoming people of wisdom, and modeling grace-filled community.

[spu.edu](https://spu.edu)

**SEATTLE UNIVERSITY** ●

Seattle University is a premier educational institution that offers students unique global opportunities in higher learning, including international academic and service programs that challenge students to test the theories and analytical approaches to understanding humanity in a dynamic intercultural setting.

[seattleu.edu](https://seattleu.edu)

**SEHGAL FOUNDATION** ●

Sehgal Foundation partners with S M Sehgal Foundation to address the most pressing issues of water security, food security, and citizen participation in India's rural communities, with particular emphasis on the empowerment of women and girls. Program areas include Water Management, Agriculture Development, Local Participation and Sustainability, Outreach for Development, and Transform Lives one school at a time.

[smsfoundation.org](https://smsfoundation.org)

**SG FOUNDATION** ●

The SG Foundation strives to serve God and the poor by giving a hand up, rather than a hand out. Our mission is to relieve suffering and improve the quality of life in communities in Mexico, Nicaragua, Guatemala, Honduras, and Haiti.

[sgfoundation.org](https://sgfoundation.org)

**SIGHTLIFE** ●

SightLife is a global health organization dedicated to the elimination of corneal blindness.

[sightlife.org](https://sightlife.org)

**SIGN FRACTURE CARE** ●

SIGN is a humanitarian organization that builds sustainable orthopaedic capacity in developing countries by providing relevant education to surgeons, then manufacturing and donating the instruments and implants needed to treat fractures.

[signfracturecare.org](https://signfracturecare.org)

**SNOW LEOPARD TRUST** ●

The Snow Leopard Trust aims to better understand the endangered snow leopard, and to protect the cat in partnership with the communities that share its habitat.

[snowleopard.org](https://snowleopard.org)

**SPECIAL OLYMPICS WASHINGTON** ●

Special Olympics was started by Eunice Kennedy Shriver in 1968 to provide people with intellectual disabilities a place to play, and feel included. Today, her vision has become a Global movement with over 4.7 million athletes competing in 169 countries. Through programming in sports, health, education and community building, Special Olympics is changing the lives of people with intellectual disabilities.

[specialolympicswashington.org](https://specialolympicswashington.org)

**SPLASH** ●

Founded in 2007, Splash delivers child-focused water, sanitation, hygiene (WASH), and menstrual health programs in collaboration with government in urban Asia and Africa. Through WASH in Schools for Everyone, Splash is taking a citywide approach to reach over 800,000 kids by 2023, helping them thrive through safe drinking water, handwashing with soap, hygienic toilets, and menstrual health support.

[splash.org](https://splash.org)

**SPOON FOUNDATION** ●

SPOON's mission is to nourish children who are highly vulnerable to malnutrition by empowering their caregivers around the globe.

[spoonfoundation.org](https://spoonfoundation.org)

**SPREEHA FOUNDATION** ●

Spreeha strives to break the cycle of poverty for underprivileged people by providing healthcare, education, and skills training. Spreeha envisions life without poverty where underprivileged people are empowered to improve their quality of life.

[spreeha.org](https://spreeha.org)

**STARBUCKS**

Starbucks' mission is to inspire and nurture the human spirit – one person, one cup, and one neighborhood at a time.

[starbucks.com](https://starbucks.com)

**SUKRAYA USA** ●

Since 1998, Sukraya has been helping educate and empower marginalized children, adolescent girls, and women by giving them access to non-formal education, primary healthcare, and economic opportunities while ensuring gender equality at the grassroots level through its programs in more than 760 villages and 190 slums benefiting more than seven millions in Delhi, Haryana, and Rajasthan in India.

[sukrayaus.org](https://sukrayaus.org)

**THE MAX FOUNDATION** ●

The Max Foundation's mission is to accelerate health equity. They do this by delivering medication, technology, and services to patients facing cancer and other critical illnesses, focusing our energy on those no one else is helping.

[themaxfoundation.org](https://themaxfoundation.org)

**THE ROSE INTERNATIONAL FUND FOR CHILDREN (TRIFC)** ●

The Rose International Fund for Children's (TRIFC) mission is to 'lift-up' Nepalese people living with disabilities and those that are disadvantaged so they can achieve their full potential. TRIFC envisions Nepal as a society that fosters dignity and hope for disadvantaged people and people living with disabilities, by providing them with the support they need to become productive, independent citizens.

[trifc.org](https://trifc.org)

**TILLER**

Tiller works with mission-driven organizations to achieve their strategic objectives by developing events, conferences, and trips that actively engage and inspire participants to action. With vast experience in global health and development, Tiller manages a wide range of programs including local fundraising events, intimate meetings for high-profile VIPs, and complex international conferences.

[tillerglobal.com](https://tillerglobal.com)

**TOSTAN** ●

Tostan empowers communities to develop and achieve their vision for the future and inspires large-scale movements leading to dignity for all. Powered by a compelling vision of universal human rights and democracy since 1991, Tostan's Community Empowerment Program (CEP) has resulted in transformative community-led change with improvements in health, income, and education across West Africa.

[tostan.org](https://tostan.org)

**UNICEF USA** ●

UNICEF USA exists to relentlessly pursue a more equitable world for every child and advances the global mission of UNICEF by rallying the American public to support the world's most vulnerable children. We won't stop until every child is healthy, educated, protected and respected.

[unicefusa.org](https://unicefusa.org)

**UNIVERSITY OF WASHINGTON EVANS SCHOOL OF PUBLIC POLICY & GOVERNANCE** ●

The Daniel J. Evans School of Public Policy & Governance at the University of Washington is committed to improving the quality of public and nonprofit service; educating leaders to meet societal challenges with compassion, vision, analytic rigor, and practicality; advancing scholarship and ideas that strengthen public policy and management; serving local and global communities; and promoting thoughtful, civil, public deliberation.

[evans.uw.edu](https://evans.uw.edu)

**UNIVERSITY OF WASHINGTON HENRY M. JACKSON SCHOOL OF INTERNATIONAL STUDIES** ●

The Henry M. Jackson School of International Studies is an internationally recognized leader in advancing the understanding of and engagement in world issues. As one of the oldest and largest schools in the country to offer undergraduate and graduate degrees in international and area studies, JSIS is dedicated to teaching and research that impact nations, communities, educators, and individuals.

[jsis.washington.edu](https://jsis.washington.edu)

**UNIVERSITY OF WASHINGTON MICHAEL G. FOSTER SCHOOL OF BUSINESS GLOBAL BUSINESS CENTER** ●

The Global Business Center's mission is to develop global business expertise by hosting and sponsoring outstanding international education initiatives.

[foster.uw.edu/centers/gbc](https://foster.uw.edu/centers/gbc)

**UNIVERSITY OF WASHINGTON OFFICE OF GLOBAL AFFAIRS** ●

The UW Office of Global Affairs collaborates across the University and the world in advancing the UW's mission of discovery and public service. Annually, 2500+ Huskies participate in the UW Study Abroad programs, receiving 400+ scholarships. Other key activities include Global Innovation Fund grants for UW faculty and researchers, and the UW Rome Center.

[washington.edu/global/gift](https://washington.edu/global/gift)





Students work together in their English language class.

Photo: Sahar Education

#### UNIVERSITY OF WASHINGTON SCHOOL OF LAW—SUSTAINABLE INTERNATIONAL DEVELOPMENT GRADUATE PROGRAM ●

The SID LL.M. program prepares students to work within organizations that include the World Bank, USAID, the United Nations development program, private consulting firms, environmental NGOs, humanitarian and human rights organizations and active military service focused on the rule of law.

[law.uw.edu/academics/llm/sustainable-development](http://law.uw.edu/academics/llm/sustainable-development)

#### UPAYA SOCIAL VENTURES ●

Upaya Social Ventures fights extreme poverty through dignified jobs. They provide investment and consulting support to early-stage businesses that create jobs for the poor. Upaya's portfolio of impact investments has created over 27,000 quality, dignified jobs in India's poorest regions.

[upayasv.org](http://upayasv.org)

#### USA FOR UNHCR ●

The United Nations High Commissioner for Refugees is a United Nations agency mandated to aid and protect refugees, forcibly displaced communities, and stateless people, and to assist in their voluntary repatriation, local integration or resettlement to a third country.

[unrefugees.org](http://unrefugees.org)

#### VILLAGEREACH ●

VillageReach transforms health care delivery to reach everyone. They develop solutions that improve access to primary health care for 70 million people in sub-Saharan Africa, and ensure products are available for the most under-reached. Radical collaboration with governments and the private sector strengthen our ability to scale and sustain these solutions.

[villagereach.org](http://villagereach.org)

#### VISTA HERMOSA FOUNDATION ●

Vista Hermosa Foundation is a branch of the Broetje Family Trust, which stewards a family legacy of 'bearing fruit that will last' through servant leadership, community building, and philanthropy. VHF invests in safe and healthy families, mindful leadership, and sustainable livelihoods in select countries in the global south and the US.

[broetjefamilytrust.org](http://broetjefamilytrust.org)

#### VOICES OF CHILDREN'S FAITH IN NORTHERN UGANDA (VOCFINU) ●

VOCFINU transform the community through empowerment in education, health, livelihood, human rights and advocacy for the girl child. Person with disabilities, youth, poor women and vulnerable persons.

[vocfinu.org](http://vocfinu.org)

#### WASHINGTON GLOBAL HEALTH ALLIANCE ●

WGHA connects and informs Washington's global health community, creating a culture of collaboration at home so that its members can have more impact in the world. WGHA brings members together through events and conversations designed to advance common goals, share best practices, and foster collaboration across organizations and disciplines.

[wghalliance.org](http://wghalliance.org)

#### WATER1ST INTERNATIONAL ●

Water1st helps the world's poorest people to implement and sustain community-managed projects that integrate clean water, toilets, and hygiene education. Water1st unites people to fight the global water and sanitation crisis. The organization believes this worldwide, silent catastrophe will be solved when people come together as a concerned community and take simple, effective actions.

[water1st.org](http://water1st.org)

**WATERAID ●**

WaterAid is an international nonprofit with a presence in 30 countries working to transform lives through access to clean water, decent toilets and good hygiene. Since 1981, WaterAid has reached 29 million people with clean water.

[wateraid.org/us/](https://wateraid.org/us/)

**WELCOME IDEAS ●**

Welcome Ideas is a US based 501(c)(3) Non-Profit Corporation, operating in Zanzibar, Tanzania as a registered Non-Governmental Organization (NGO). Through education, support, networking, and pop-up facilities, Welcome Ideas helps members of the local Zanzibar community develop, finance, and operate their own tourism related businesses.

[welcomeideas.org](https://welcomeideas.org)

**WOMEN'S LINK WORLDWIDE ●**

Women's Link Worldwide is a nonprofit organization that uses the power of the law to promote social change that advances the human rights of women and girls, especially those facing multiple inequalities. Its team uses legal, communications and mobilization strategies to work across two program areas: sexual and reproductive rights and gender-based violence, in Latin America, East Africa and Europe.

[womenslinkworldwide.org/en](https://womenslinkworldwide.org/en)

**WORLD AFFAIRS COUNCIL ●**

As a hub for all things international, the World Affairs Council creates programs and opportunities for local people to interact directly with leaders, educators, and professionals from around the world.

[world-affairs.org](https://world-affairs.org)

**WORLD CONCERN ●**

World Concern is a Christian global relief and development agency extending hope and opportunity to people facing extreme poverty.

[worldconcern.org](https://worldconcern.org)

**WORLD JUSTICE PROJECT ●**

The World Justice Project is an independent, multidisciplinary organization working to advance the rule of law around the world. Effective rule of law reduces corruption, combats poverty and disease, and protects people from injustices large and small. The World Justice Project conducts survey research and engagement activities in 140 countries and supports a global network of strategic partners.

[worldjusticeproject.org](https://worldjusticeproject.org)

**WORLD VISION ●**

World Vision is a Christian humanitarian organization dedicated to working with children, families, and their communities worldwide to reach their full potential by tackling the root causes of poverty and injustice.

[worldvision.org](https://worldvision.org)

**WORLDREADER ●**

Worldreader is a global nonprofit whose mission is to help the world read through increased accessibility to digital books.

[worldreader.org](https://worldreader.org)

**WORLDWIDE FISTULA FUND ●**

Worldwide Fistula Fund is a global health nonprofit that provides free, surgery, treatment, prevention and rehabilitation programs and services to women and girls suffering from obstetric fistulas in sub-Saharan Africa.

[worldwidefistulafund.org](https://worldwidefistulafund.org)

**YEMEN RELIEF AND RECONSTRUCTION FOUNDATION ●**

The Yemen Relief and Reconstruction Foundation's aims to increase awareness of the US public and policymakers vis-a-vis the humanitarian crises underway in Yemen, and support relief and reconstruction, while facilitating peace campaigns.

[yemenfoundation.org](https://yemenfoundation.org)

**PANGEA GIVING, A PROGRAM OF GLOBALWA, GRANT PARTNERS****LATIN AMERICA**

AC Esperanza – Guatemala  
*Partner since 2016*

MUSOR AC – Mexico  
*Partner since 2019*

Taa'Pi't – Guatemala  
*Partner since 2019*

UNOSJO – Mexico  
*Partner since 2019*

**EAST AFRICA**

Child Empowerment  
Programme – Uganda  
*Partner since 2018*

Ewang'an Olosho  
Le Suswa – Kenya  
*Partner since 2021*

Playmakers Theatre –  
Kenya  
*Partner since 2019*

Solidarity Eden Foundation –  
Uganda  
*Partner since 2019*

Ufanisi Women's Group –  
Kenya  
*Partner since 2018*

Women In Sustainable  
Enterprise – Kenya  
*Partner since 2019*

East Africa Leadership  
Forum – Kenya  
*Program since 2016*

**SOUTHEAST ASIA**

Cambodia Indigenous Youth  
Association – Cambodia  
*Partner Since 2020*

Cambodia Indigenous  
Women Association –  
Cambodia  
*Partner Since 2022*

Fortune – Thailand  
*Partner since 2023*

Green Community  
Volunteers – Laos  
*Partner Since 2022*

To learn about these organizations and our Pangea Giving grantmaking, visit: [pangeagiving.org/grantmaking](https://pangeagiving.org/grantmaking)

● 501(c)(3) non-profit organization

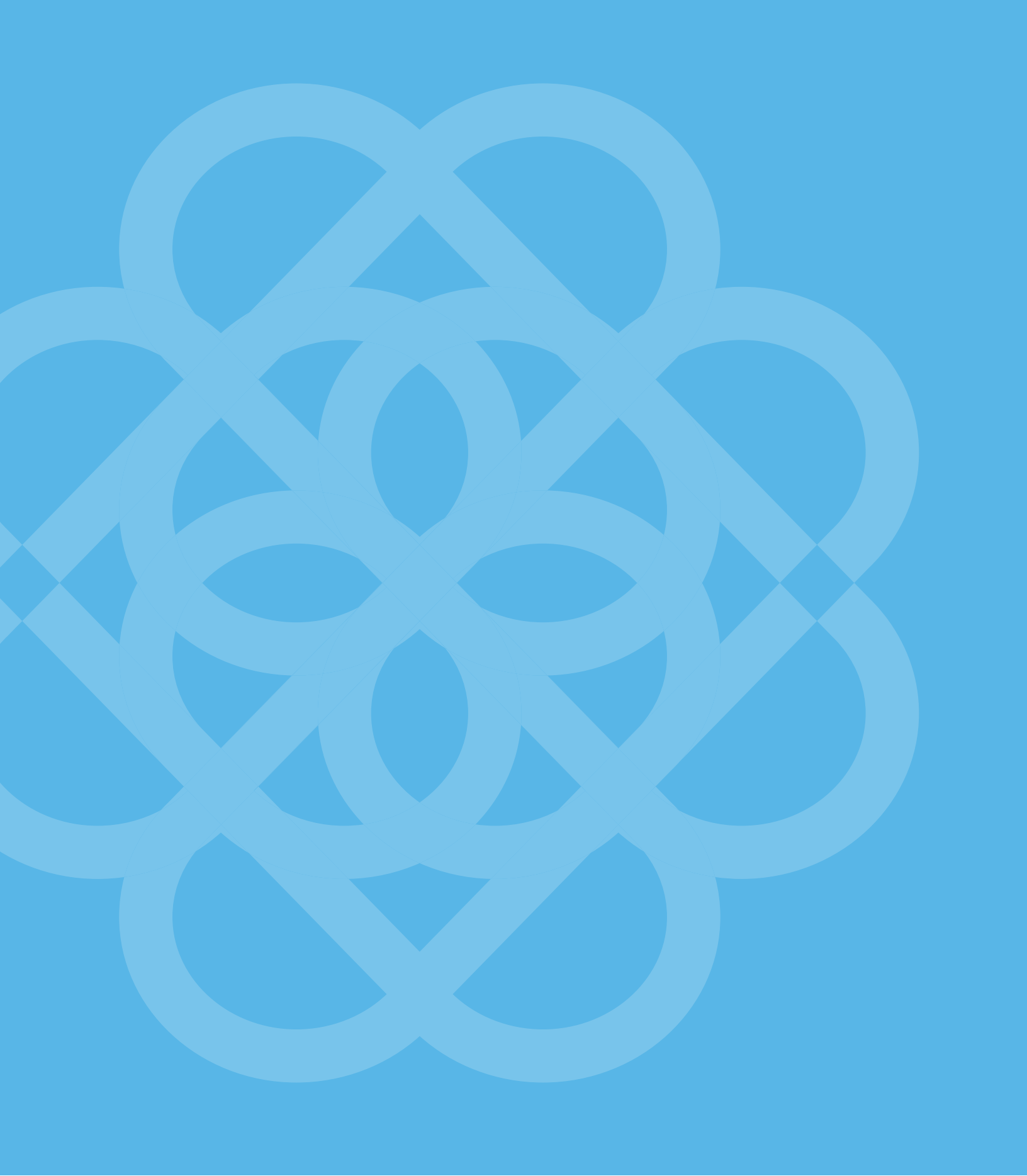


Worldreader's CreceLee project  
in Peru's Cusco region.

Photo: Worldreader







GLOBALWA

10115 Greenwood Ave N. #142 | Seattle, WA 98133